

Montgomery Village News

Volume XLVII, No. 5

March 3, 2017

www.montgomeryvillage.com



photo by Melanie Maggi

Board approves pre-season pool work at February meeting

by Mike Conroy

Even though the recent weather has been warm, most residents are probably not thinking about the summer pool season just yet. But, to be ready for when it is time to take that first dip, the Montgomery Village Foundation (MVF) Board of Directors approved bids for pre-season pool work at their February 23 meeting.

The Board reaffirmed a previous e-mail vote to replace the wading pool slide at Whetstone Pool. The current whale slide did not hold up after a few seasons, despite being resurfaced once already. After much searching, with the aid of Paddock Pools, a new, all-

fiberglass alternate was identified. The Board authorized \$24,232 for the purchase and installation of the new slide.

Bids were also awarded to Winkler Pool Management and Poolservice Company in the amounts of \$20,200 and \$16,400, respectively, to perform caulking, skimmer replacement and de-winterization of MVF pools. This prep work covers pre-season renovation, repairs and maintenance either required by Montgomery County or to maintain MVF pools at a high level, ensuring they are ready for the summer demands.

See BOARD page 6

Participants of the February 17 Wine & Paint event had a wonderful time! The group included birthday partiers, girl's nights out and families just enjoying an evening together. Everyone's "Winter Cardinal" scene turned out great! Look for more great paint events like this in the Spring Recreation Guide, inserted in the Friday, March 17 issue of the *Village News*.

Village Center community meeting rescheduled

Atlantic Realty Companies (ARC), the owner of the Village Center, had previously scheduled a community meeting regarding the center for Tuesday, Feb. 21.

Due to some changes in the sketch plan, this meeting has been rescheduled for 7 p.m. on Wednesday, March 29 at North Creek Community Center, 20125 Arrowhead Road.

Residents are invited and encouraged to attend to receive an update on the redevelopment of the Village Center.

MVF ANNUAL MEETING

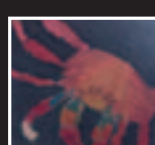
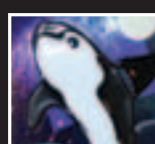
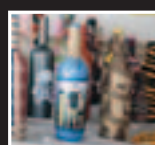
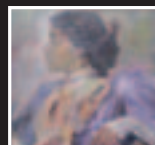
Thursday, March 23

immediately following the MVF Board meeting
(at approximately 7:45 p.m.)

NORTH CREEK COMMUNITY CENTER
20125 ARROWHEAD ROAD

Residents are encouraged to attend this meeting to welcome newly elected Board members to their positions, receive a financial update, hear the President's address and congratulate community members awarded for outstanding service.

A regular MVF Board meeting will precede the Annual Meeting, beginning at 7 p.m., also at North Creek Community Center. The meeting agenda and packet information will be available online at www.montgomeryvillage.com the week of the meeting.



43rd Annual Art, Craft & Photography Show

North Creek Community Center
20125 Arrowhead Road

Saturday, March 11 | 1 to 5 p.m.
Sunday, March 12

Artists' Reception
Sunday, March 12 from 4 to 5 p.m.

Artists can download registration forms at www.montgomeryvillage.com, pick them up at the MVF Office, 10120 Apple Ridge Road, or e-mail mmaggi@mvf.org. No entries will be accepted before registration on Thursday, March 9.

For more information, call Melanie Maggi at 240-243-2338, or e-mail mmaggi@mvf.org.

LOOK INSIDE

Creative Discovery
Open House dates
set for March



See page 14

Help a high school
senior prepare for
college

See page 8

Now is the time to
start thinking spring
home projects



See page 13

Contents

At Your Leisure	18
Classifieds	22
Homes Corporations.....	10
East Village Echo.....	10
Middle Village Voice.....	12
North Village View.....	11
South Village Scenes....	10
In the News.....	5
Kids Page	16
Letters to the Editor	5
Milestones	19
MVF Board Motions.....	3
MVF Meeting Agendas	2
MV Seniors	17
Neighborhood Noteboard	2
President's Message	3
Professional Directory	21
Real Estate	23
Recreation	14
School News.....	18
Services Around Town	20



Visit MVF online at
www.montgomeryvillage.com
facebook: MontVillageMD
twitter: @MontVillageMD

**REGISTER
ONLINE
FOR MVF CLASSES
AND PROGRAMS.**

**VISIT WWW.
MONTGOMERY
VILLAGE.COM TO
GET STARTED.**



MVF MEETING AGENDAS

MVF BOARD OF DIRECTORS

The MVF Board of Directors meeting is scheduled for 7 p.m. on Thursday, March 23 in the North Creek Community Center, 20125 Arrowhead Road. The Annual Meeting will be held at approximately 7:45 p.m., with a review of 2016 and a look ahead, with newly elected Board members Community service Awards.

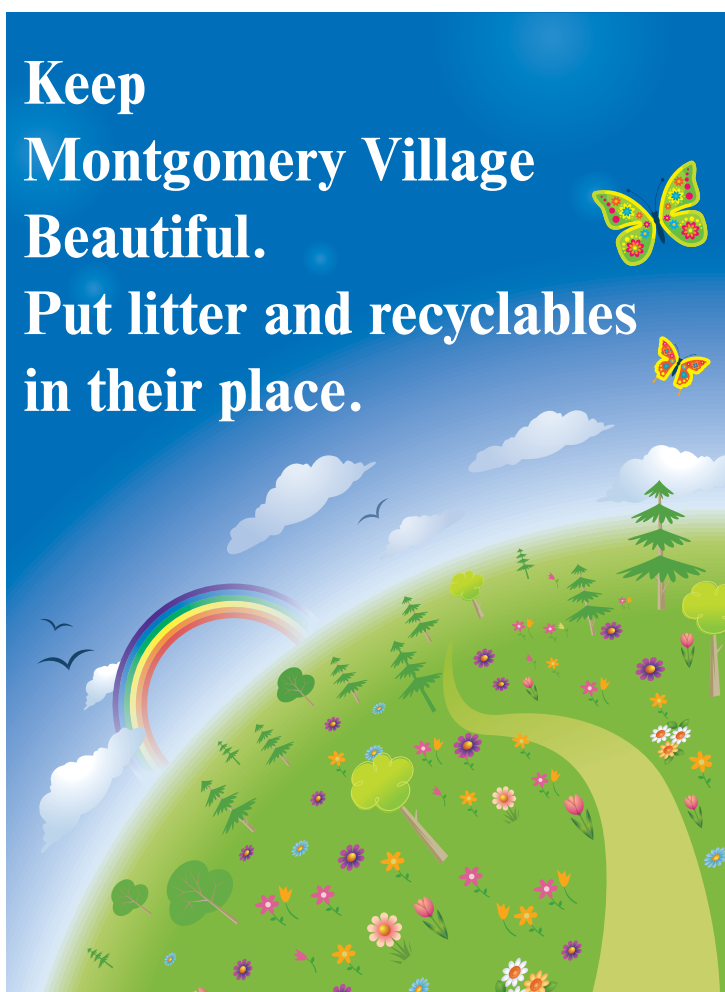
AUDIT COMMITTEE

The Audit Committee meeting is scheduled for 7 p.m. on Tuesday, March 7 in the North Creek Board Room, 20125 Arrowhead Road.

ELECTION COMMITTEE

The Election Committee meeting is scheduled for 7 p.m. on Friday, March 3 at the MVF Office, 10120 Apple Ridge Road. Ballot count is scheduled for 9 a.m. on Saturday, March 4, also at the MVF Office.

Note: All meeting agendas listed in this section are current as of the deadline date for this publication. The listings do not include every agenda item. This information is also available on the MVF website at www.montgomeryvillage.com.



NEIGHBORHOOD NOTEBOARD

CENTER COURT CONDOMINIUM

The Center Court Condominium meeting is scheduled for 7:30 p.m. on Tuesday, March 28 at the Heron's Cove Office, 19101 Mills Choice Road.

EASTGATE

The Eastgate Homes Corporation meeting is scheduled for 7:30 p.m. on Tuesday, March 14 at the Lake Marion Community Center, 8821 East Village Avenue. This meeting includes the Annual Meeting.

EAST VILLAGE

The East Village Homes Corporation meeting is scheduled for 7:30 p.m. on Tuesday, March 21 at the Lake Marion Community Center, 8821 East Village Avenue. This meeting includes the Annual Meeting.

MARYLAND PLACE

The Maryland Place Homes Corporation meeting is scheduled for 7 p.m. on Wednesday, March 15 at the Whetstone Community Center, 19140 Brooke Grove Court. This meeting includes the Annual Meeting.

MIDDLE VILLAGE

The Middle Village Homes Corporation meeting is scheduled for 7 p.m. on Tuesday, March 28 at the Thomas Choice Party Room, 19401 Brassie Place. This meeting includes the Annual Meeting.

NORMANDIE-ON-THE-LAKE I CONDOMINIUM

The Normandie-on-the-Lake I Condominium meeting is scheduled for 7 p.m. on Wednesday, March 22 at the NOLI office, 18701 Walker's Choice Road #3.

NORTHGATE

The Northgate Homes Corporation meeting is scheduled for 7 p.m. on Tuesday, March 14 in the North Creek Board Room, 20125 Arrowhead Road. This meeting includes the Annual Meeting.

PATTON RIDGE

The Patton Ridge Homes Corporation meeting is scheduled for 7 p.m. on Tuesday, March 28 in the North Creek Board Room, 20125 Arrowhead Road.

SOUTH VILLAGE

The South Village Homes Corporation meeting is scheduled for 7 p.m. on Wednesday, March 22 in the North Creek Board Room, 20125 Arrowhead Road.

STEDWICK

The Stedwick Homes Corporation meeting is scheduled for 7:30 p.m. on Wednesday, March 15 in the North Creek Board Room, 20125 Arrowhead Road. This meeting includes the Annual Meeting.

THOMAS CHOICE CONDOMINIUM

The Thomas Choice Condominium meeting is scheduled for 7 p.m. on Monday, March 13 in the North Creek Board Room, 20125 Arrowhead Road.

THOMAS CHOICE GARDENS CONDOMINIUM

The Thomas Choice Gardens Condominium meeting is scheduled for 6:30 p.m. on Tuesday, March 14 at the Thomas Choice Party Room, 19401 Brassie Place.

WHETSTONE

The Whetstone Homes Corporation meeting is scheduled for 7 p.m. on Thursday, March 9 in the North Creek Board Room, 20125 Arrowhead Road. This meeting includes the Annual Meeting.

Copy & Ad Deadlines

COPY:

E-MAILED OR ON DISK DUE:*

MONDAY, MARCH 13 AT 5 P.M.

MAILED, FAXED OR TYPED DUE:

FRIDAY, MARCH 10 AT 5 P.M.

DISPLAY ADS:

DUE:

FRIDAY, MARCH 10 AT 5 P.M.

*preferred method of receipt

Attention writers:

Copy is gratefully accepted electronically!

Provide text on disk or e-mail to mvnews@mvf.org.

E-mail classifieds to classifieds@mvf.org.

See page 3 for more on how to contact us.

Submissions received after the publication deadline will not be published in that edition.

*next issue
Friday,
March 17*



Montgomery Village News

Serving the residents of Montgomery Village

The Montgomery Village News is the official newsletter of the Montgomery Village Foundation, Inc., and its Board of Directors. Its purpose is to disseminate news and information in accordance with the Editorial Policy of the Foundation.

Publisher:
MVF Board of Directors
Montgomery Village Foundation
10120 Apple Ridge Road
Montgomery Village, MD 20886

Phone: 301-948-0110
FAX: 301-990-7071
MVF e-mail: mvinfo@mvf.org
MV News e-mail: mvnews@mvf.org
MVF 24-hour Board Voice Mail:
301-948-0110, press 5

Office hours:
 The MVF Office, 10120 Apple Ridge Road, is open Monday - Friday from 8:30 a.m. to 5 p.m.

Director of Communications
 Mike Conroy, 240-243-2331
mvnews@mvf.org

Sales and Marketing Manager
 Humberto Benitez, 240-243-2359
hbenitez@mvf.org

Communications Assistant
 Roz Price, 240-243-2339
rprice@mvf.org

Graphic Designer
 Maria Pullifrone, 240-243-2321
mpullifrone@mvf.org

Sales and Marketing Assistant
 Charity Gutierrez, 240-243-2342
cgutierrez@mvf.org

Website:
www.montgomeryvillage.com

24-HOUR MVF EMERGENCY PHONE:
 301-576-1204
 800-215-1784

Articles appearing in the *Montgomery Village News* are presented as a community service. They do not necessarily represent the views of the Montgomery Village Foundation.

The advertisements in the *Montgomery Village News* are not intended to be an endorsement by the Montgomery Village Foundation of any business or individual.



MVF Board of Directors Officers

President
 Pete Young

Vice President
 Dennis Clark

Treasurer
 Robert Carey

Directors
 Pamela Bort
 John Driscoll
 Scott Dyer
 Laura Franke
 Glenn Gargan
 Jim Marsh
 Peter Webb

Executive Vice President
 David Humpton

PRESIDENT'S MESSAGE

Pride



by Pete Young
 MVF President

I suspect that all of us feel like the past year has seen a level of national unease, political soul searching and level of emotion that we have not experienced for many years, if ever. I for one cannot recall a time in my life when the political environment was so heated for so long, so divided and people on all sides of the election and issues feel so personally impacted and engaged.

Why do I raise this topic? Whether we are thinking about the national political stage, the world stage, or simply our own Village there are big changes afoot and so many of us feel anxiety about them. What to do, how to react, how to treat each other and especially how to behave when it comes to folks with differing viewpoints, backgrounds and demographics is a challenge that we live every day.

I call attention to this as a preface for this: I feel proud. I feel proud because I see people engaging, thinking hard, chal-

lenging long held beliefs and acting. I spoke recently about your civic duty as it relates to voting. I am reflecting now on what it means to act on your beliefs beyond that – not simply to vote (although that is the “ticket to the dance”), but rather to engage with your community and find ways to advocate for your interests, to challenge positions that you feel are wrong and to help shape in a material way the community, state and country we all live in.

I spent the other night at a meeting of like-minded folks who want to do something regarding actions, positions and beliefs that they disagree with. These people all feel they need to act, make a difference and make their voices heard in a productive and meaningful way. I am proud to see this. I have been frustrated at times about disengagement – or indifference – that seems to be common in our democracy. Seeing this energy and effort being deployed against issues they feel strongly about is key to our model of government; we must cherish, protect and exercise these rights. I challenge you all to do this. While we may not agree at times, the right to advocate your position is dear. Jump in, engage, and be proud.

As always I invite you to get involved, share your talents and thoughts with us and help Montgomery Village stay the amazing community it has been all these years. I welcome your feedback; please e-mail me at peter@youngspa.com.

Cheers,
 Pete

Residents with financial background needed for Investment Committee

The Montgomery Village Foundation (MVF) Board of Directors is seeking volunteers to serve on the MVF Investment Committee. Residents (homeowners or renters) with financial backgrounds are encouraged to apply.

The Investment Committee advises the Board on matters related to the Foundation's investment activities. The committee meets quarterly at 7 or 7:30 p.m. on Monday evenings (dates to be determined). Responsibilities include making recommendations to the Board on investment strat-

egy and policy and approving investment transactions that are in line with the policy. Currently, MVF has approximately \$8 million invested. Certified Financial Advisors, Investment Advisors, Chief Financial Officers or others with expertise in investment management/banking are encouraged to apply.

For more information, contact MVF CFO Greg Snellings at 240-243-2323 or e-mail gsnellings@mvf.org. To apply, visit www.montgomeryvillage.com or the MVF Office, 10120 Apple Ridge Road.

MVF BOARD MOTIONS

MONTGOMERY VILLAGE FOUNDATION BOARD OF DIRECTORS MOTION LIST

February 23, 2017

1. Mr. Marsh moved to approve the minutes of the regular Board of Directors' meeting held January 26, 2017 as presented. The motion was seconded and passed with all in favor; Mr. Dyer abstained.
2. Mr. Gargan moved to accept the Action List as presented. The motion was seconded and passed unanimously.
3. Mr. Gargan moved to approve Christine Scott and John Llewellyn for membership to the Communications Committee. The motion was seconded and passed unanimously.
4. Mr. Dyer moved to approve the amendments to the Personnel Handbook. The motion was seconded and passed unanimously.
5. Mr. Marsh moved to authorize the EVP to negotiate and execute a limited pool use agreement with Thomas Choice Condominium in an amount not to exceed \$10,000 for the 2017 pool season and if possible include terms in the agreement that would provide for automatic renewal of the agreement for a period not to exceed 5 years which includes a reasonable fee escalation based on the CPI. The motion was seconded and passed with all in favor; Ms. Franke abstained.
6. Ms. Franke moved to reaffirm the email vote of the Board to authorize \$24,232 plus 10% for unforeseen issues for the purchase and installation of a wading pool slide at Whetstone Pool. The motion was seconded and passed unanimously.
7. Mr. Dyer moved to award the bids for caulking and skimmer replacement to Winkler Pool Management for the total cost of \$20,200, and authorize the purchase of additional skimmers at the unit cost of \$700, if necessary; to award MVF 2017 dewinterization for MVF pools to Poolservice Company for the total cost of \$16,400 plus time and material work including but not limited to coping stone replacement and resetting, replacement of brick coping, tile replacement and white coat patching based on unit pricing at an estimated cost of \$30,000; and to authorize contracting with Winkler Pool Management and Poolservice Company for the same pool maintenance services in the second and third year based on performance. The motion was seconded and passed unanimously.
8. Mr. Gargan moved to accept the committee reports. The motion was seconded and passed unanimously.
9. Mr. Marsh moved to adjourn the regular meeting at 8:01 p.m. pursuant to Section 11B Real Property, of the Annotated Code of Maryland (Maryland Homeowners Association Act) to go into closed session for (viii) Discussion of individual owner assessment accounts, (i) Discussion of matters relating to employees and personnel, and (iv) Consultation with staff, personnel, consultants, attorneys, board members, or other persons in connection with pending or potential litigation or other legal matters. The motion was seconded and passed unanimously.

Share Your Milestones



Email mvnews@mvf.org or complete the Milestones form online at www.montgomeryvillage.com.

Montgomery Village News



MONTGOMERY VILLAGE

Calendar of Events



Sunday	Monday	Tuesday	Wednesday	Thursday	Friday	Saturday
			Don't Miss It! March 4 MVF Ballot Count 11, 12 Art, Craft and Photography Show 12 Art Show Artist's Reception 18 MV Home Show 23 MVF Annual Meeting 24 Lego Block Party		Village News 3 MVF Ballot Deadline – 5 pm Election Committee 7 pm – MVF Office	4 MVF Ballot Count 9 am – MVF Office
5	6	7 Audit Committee 7 pm – NCBR	8 Seniors in Action 10 am to noon – SCC MV Community Band 7 pm – SCC	9 Registration for Art, Craft & Photography Show 3 to 8 pm – NCCC Whetstone HC 7 pm – NCBR (Annual Meeting)	10	11 MV Camera Club 10 am to noon – NCBR Art, Craft & Photography Show 1 to 5 pm – NCCC
12 Daylight Saving Time begins Art, Craft & Photography Show 1 to 5 pm – NCCC (Artists' Reception – 4 pm)	13 Thomas Choice Condo 7 pm – NCBR Montgomery Village Garden Club 7:15 pm – WCC	14 Thomas Choice Gardens 6:30 pm – TCPR Northgate HC 7 pm – NCBR (Annual Meeting) Eastgate HC 7:30 pm – LMCC (Annual Meeting)	15 Seniors in Action 10 am to noon – SCC Maryland Place HC 7 pm – WCC (Annual Mtg.) MV Community Band 7 pm – WMHS Stedwick HC 7:30 pm – NCBR (Annual Mtg.)	16	Village News 17 St. Patrick's Day Home Improvement Guide Spring Recreation Guide	18 Home Show 9 am to 3 pm – LMCC
19	20	21 East Village HC 7:30 pm – LMCC (Annual Meeting)	22 Seniors in Action 10 am to noon – SCC MV Community Band 7 pm – SCC Normandie I 7 pm – NOLI Office South Village HC 7 pm – NCBR	23 MVF Board of Directors 7 pm – NCCC (7:45 pm – Annual Meeting)	24 Lego Block Party Ages 5 & Older 7 to 9 pm – NCCC (Pre-registration required)	25
26	27	28 Middle Village HC 7 pm – TCPR (Annual Meeting) Patton Ridge HC 7 pm – NCBR Center Court Condo 7:30 pm – Heron's Cove Office	29 Seniors in Action 10 am to noon – SCC Community Meeting re: Village Center 7 pm – NCCC MV Community Band 7 pm – SCC	30	Village News 31	April 1

KEY:

BMP Bowie Music Pavilion (See South Valley Park)
 CTS Christ the Servant Lutheran Church, 9801 Centerway Rd.
 LMCC Lake Marion Community Center, 8821 East Village Ave.
 MVF Office..... 10120 Apple Ridge Rd.

NCBR North Creek Board Room, 20125 Arrowhead Rd.
NCCC North Creek Community Center, 20125 Arrowhead Rd.
SCC Stedwick Community Center, 10401 Stedwick Rd.
SVP South Valley Park, 19003 Watkins Mill Rd.

TCPR..... Thomas Choice Party Room, 19401 Brassie Pl.
WCC..... Whetstone Community Center, 19140 Brooke Grove Ct.
WHPR..... Walker House Party Room, 18700 Walkers Choice Rd.

All facilities are handicap accessible. All information tentative and subject to change.

MONTGOMERY VILLAGE NEWS LETTERS TO THE EDITOR POLICY

1. The *Montgomery Village News* Letters to the Editor section is a community forum for Montgomery Village residents and/or property owners. In addition, at the Editor's discretion, the *Montgomery Village News* may print letters of appropriate interest to residents from others, including representatives of local schools, governments and businesses. Campaign letters are prohibited, except for Montgomery Village Foundation and Village homes corporation elections. The views expressed in the Letters to the Editor section are those of the authors of the letters and not necessarily those of the Montgomery Village Foundation (MVF) or its Board of Directors.

2. The *Montgomery Village News* will make every effort to publish all letters received during the weeks prior to publication.

3. Typed letters and e-mail must be received no later than 5 p.m. on the Monday prior to publication and distribution, while handwritten letters must be received no later than noon on the Friday, one week prior to publication. When a holiday occurs on a deadline Monday, Letters to the Editor must be received no later than noon on the subsequent Tuesday prior to the Friday publication and distribution.

4. Letters must bear the writer's name, address and telephone number for verification purposes. The sole use of pen names, initials or the complete omission of a signature will eliminate a letter from consideration from publication. A request from the author to withhold the name or mark the letter anonymous will eliminate the letter from consideration.
5. All letters are subject to condensation or deferral to the next issue by the

editor for space considerations, if absolutely necessary. Editor is to so indicate any condensations.

6. All letters may not exceed 300 words. Longer letters will be eliminated from consideration for publication in the Village News. As time permits, the writers may be notified and given the opportunity to shorten the letter for future publication. Letters exceeding 300 words which meet all other criteria of this policy may be published on the MVF website.

7. The *Village News* respects the privacy of individuals and residents; letters should not contain references to specific persons, except when endorsing candidates for MVF or Village homes corporation elections or referencing a previously published article with a byline.

8. Letters submitted by an author regarding the same topic must present new information or opinions; repetitive submissions and/or form letters submissions will only be printed once.

9. The Letters to the Editor section is not a forum for extensive debates; MVF encourages residents to use other avenues such as facebook and twitter for timely discussion.

10. All e-mail is subject to this policy. The e-mail subject line must read "Letter to the Editor."

- All e-mail letters must include the writer's full name, address and telephone number for verification.

- As with letters delivered to the MVE office in person or by the U.S. Postal Service, the *Montgomery Village News* will make every effort to publish all letters received prior to the publication deadline.

11. MVE retains the right to respond to letters to the editor addressing specific issues involving it in the form of editor's notes or other methods at its discretion, and extends the same opportunities to homeowner or condominium association boards regarding letters specifically aimed at those boards.

12. The Director of Communications, in his/her sole discretion, reserves the right to withhold from publication of inflammatory, slanderous, libelous, or lewd material, or material which may be an invasion of privacy, material deemed in bad taste and inconsistent with *Montgomery Village News* editorial policy, or other language which opens MVF to potential legal liability, and limit the number of letters on a given subject when the number is so large it presents a problem.

E-mail letters to mvnews@mvpf.org.

IN THE NEWS

Letters to the Editor

Editor:

In 2009 when the Webb Tract wars between Montgomery Village and Montgomery County were raging, the Route Protocol was designed to protect Montgomery Village from the onslaught of large trucks and emergency vehicles stemming from the operations of the county facilities being relocated to the Webb Tract. Thanks to Edna Miller, whose sharp-eyed alertness in 2017 has revealed that the county has neglected to enforce the Route Protocol.

Despite the fact that the county accepted the Route Protocol, and the county executive made a commitment to its implementation, the county has reneged on the commitment it made in 2009. Just what

is the Route Protocol? In short, the Route Protocol establishes "no drive zones" for Webb Tract traffic.

The "no drive zones" serve to insulate the community from the effects of these traffic impacts by specifying the streets to be avoided by delivery trucks and other vehicles coming and going from the Webb Tract. The streets to avoid include Centerway Road, Goshen Road, Montgomery Village Avenue, Wightman Road, Lewisberry Road and East Village Avenue.

The Route Protocol implements the "no drive zones" by providing explicit shipping and receiving instructions, including route instructions for arrivals and departures at the Webb Tract. The Route

Protocol for arrivals instructs trucks destined for the Webb Tract to take I-270 or Route 355 to Shady Grove and then to Snouffer School Road. The Route Protocol for departures instructs the driver to exit left on Snouffer School Road, proceed past Centerway to Route 124 and then to Shady Grove Road. Two specific exceptions from complying with the Route Protocol Policy are identified as Personal Patrol Vehicles (PPV) and Fire Trucks on call.

I urge the Montgomery Village Foundation and its Board to take the steps necessary to hold the county responsible for following through.

Don O'Neill
Whetstone

Editor:

I wish to comment on the Montgomery Village Shopping Center "sketch plan" approved by the MC Planning Commission on December 15, 2016. There is either not enough parking for the number of residences (299,; or too many residences for the available parking (519 residential parking places).

Page 19 of the report on file for this meeting indicates that there will be 1,071 parking places in the new Village Center, 519 residential and 552 non-residential/commercial.

Page 22 gives the percentages for the four types of residential units, 299 in all. Parsing this out, it comes to 24 efficiency units, 81 1-bedroom units, 158 2-bedroom units and 36 3-bedroom units.

How many parking places are needed? I offer the following projection: one parking place for each of the 24 efficiency units; two places (husband, wife) for each of the 81 1-bedroom units; and three places (husband, wife, teenager or possibly three adults in a multi-family situation)

for each of the 158 2-bedroom units and 36 3-bedroom units.

This comes to 768 parking places, far more than the 519 parking places indicated in the developer's plan for residential use.

I can only guess that the developers believe that the planned ratio of parking places to units (1.7) is typical for similar developments. However, what we see around us is nearly every street filled with parked cars, panel vans and trucks. What worked in the past is not working anymore, possibly because there are more residences in the area being shared by multiple family units.

The Village Center acreage just can't fit as many residential units and potential residents as the developers would like. Without some reductions in scope, the only choices I see for the inevitable residential parking overflow are nearby streets or the spaces designated for the "Phase 2" revitalized shopping center.

William R. Ott
Whetstone

Editor:

Whetstone residents should realize that if Amendment 2 were approved, it would become much easier to change the existing covenant that prohibits overnight parking of trucks on community roads.

Currently it takes a vote of $\frac{2}{3}$ of the homeowners to approve a change in the truck policy or an assessment increase. If the amendment were to be approved, as few as $\frac{1}{3}$ of residents could change the truck policy or increase your assessments.

The change would require a quorum of 50 percent. If $\frac{2}{3}$ of those voting were in favor, the covenant change would pass ($\frac{2}{3}$ of 50% is equal to only $\frac{1}{3}$

of the number of residences). A relatively small number of residents, armed with proxies, could change the covenants. Do we really want to make it possible for a minority of residents to impose their views on the entire community?

Clearly, this has the potential to create problems and divide the community. Do we really want to allow the truck policy or assessment increases to be changed with as few as $\frac{1}{3}$ of the residents voting in favor?

I suggest not voting for this amendment at all. Not voting is a deliberate strategy to maintain the existing truck policy. A vote against this amendment would only contribute

towards the quorum needed to approve it.

If you have already voted, you should be able to request a new ballot to change your vote.

Dick Perry
Whetstone

Editor:

Whetstone home owners are strongly encouraged to vote to prohibit the Adult Daycare or Medical Daycare Services proposition for individuals who are not a resident of their dwelling unit. Ballot information was mailed recently, and the ballot must be delivered to the Montgomery Village Foundation by Sunday, May 14.

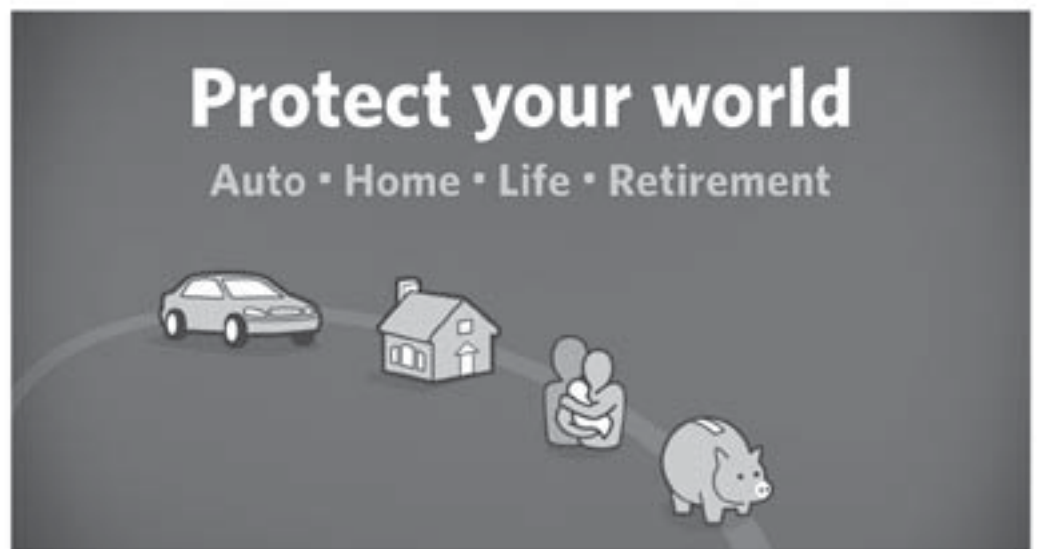
Residents are also encouraged to vote approval of Amendment 2 which will allow a quorum of 50% of eligible

voters to consider an amendment to the covenants or other community-wide propositions, with the understanding that it takes two-thirds of those voting to approve a proposed change or proposition.

Approval of these measures ensures Whetstone remains as a solid and highly developed community. It is very important to every resident and positive community future to support the outstanding character of Whetstone.

Bob Nechanicky
Whetstone

Stay connected with Montgomery Village



Call me today to discuss your options.

Some people think Allstate only protects your car. Truth is, Allstate can also protect your home or apartment, your boat, motorcycle - even your retirement and your life. And the more of your world you put in Good Hands®, the more you can save.



Venice Mundle-Harvey

301-740-2302

18564 Office Park Drive
Montgomery Village
vmundle-harve@allstate.com



Allstate.
You're in good hands.

Auto Home Life Retirement

Insurance subject to terms, qualifications and availability. Allstate Property and Casualty Insurance Co., Allstate Indemnity Co., Allstate Insurance Co., Allstate Vehicle and Property Insurance Co. Life insurance offered through Allstate Life Ins. Co. & Allstate Assurance Co. Northbrook, IL; Lincoln Benefit Life Co., Lincoln, NE; and American Heritage Life Insurance Co., Jacksonville, FL. Securities offered by Personal Financial Representatives through Allstate Financial Services, LLC (LSA Securities in LA and PA). Registered Broker-Dealer. Member FINRA, SIPC. Main Office: 2900 South 84th Street, Lincoln, NE 68506. (877) 525-5727. © 2010 Allstate Insurance Co.

IN THE NEWS

Board

Continued from page 1

OTHER AGENDA ITEMS

The Board also approved changes to the MVF Personnel Manual, as recommended by the Personnel Committee. Clarifications of employee categories were due to the new Montgomery County Sick and Safe Leave Policy.

Village residents Christine Scott and John Llewellyn were appointed to the Communications Committee. Scott and Llewellyn bring a vast amount of communications, marketing, IT and strategic planning experience to the committee.

Finally, the Board approved Executive Vice President (EVP) Dave Humpton to negotiate and execute a limited pool use agreement with Thomas Choice Condominium for the 2017 pool season. Terms of the agreement may also include an automatic 5-year renewal, with reasonable fee escalation based on the Consumer Price Index.

PRESIDENT’S REMARKS

Board President Pete Young thanked the residents and candidates who attended the “Meet the Candidates” event prior to the meeting. He noted

that ballots were due soon and encouraged all residents to vote. Young also mentioned that it was nice to see so many neighbors and residents out enjoying the unseasonably warm weather. He said that during a time when we’re used to being cooped up inside, it was a great reminder of how great the community really is.

EVP’S REPORT

EVP Humpton invited Assistant Director of Recreation, Parks and Culture Scott Gole to give an update on the county’s Outfall Tower repair project at Lake Whetstone. Gole reported that the concrete work was completed in mid-January and must fully cure before the water level is restored to normal. Once the water level is restored (which is dependent on rainfall), the barge will be able to install the slue gate and trash rack. Work is expected to be finished by mid-March, with the park re-opening in mid-April. Humpton added that as much trash as could be safely reached was extracted from the lake. Residents are reminded not to venture into the lake while the water levels are lowered.

Humpton also noted that TransWestern, the owner of the Professional Center, was working to board up and secure the center. They report that they currently have a contract pending on the site. Humpton said even if the contract went through, it would easily be two to three years before there would be any development on the site. In the meantime, county police will include the site on their daily patrol.

Regarding current legislation, Humpton asked the Board for opinions on supporting two bills currently under review. HB789 proposes that condominium and HOA by-laws be changed by less than the current 66 2/3 % quorum and redefines “good standing” as a resident no more than 90 days delinquent. MVF’s previous position on such legislation was not in favor; however, in doing further research, along with three of the Village’s largest HOAs, would support recommending a 55% quorum and “good standing” as having no delinquency.

Regarding HB651 - Reserves Studies, the bill would require HOAs of more than

50 units to perform regular Reserve Studies to replace common elements. MVF’s position is that it is advisable for boards to perform reserve studies and plan for future, and therefore would support this legislation. The bill does not specifically require hiring a Reserve Specialist to perform the work, but the concept of planning for the future seems reasonable and responsible for associations.

TREASURER’S REPORT

Treasurer Bob Carey reported on MVF’s financial health for January 2017. Carey noted the Balance Sheet reported activity for 2017 and showed MVF’s continued strong financial position. MVF currently has just under \$8.5 million in Cash and Investments, and Equity of \$14.9 million, a 7.3% increase over last year.

Carey said Revenue for the month was \$726,000, and favorability to the budget in these areas was due to timing and will correct over the course of the year. He noted the same for Personnel costs, saying they were below budget

now and will even out with seasonal work later in the year. Carey reported that Expenses followed the same trend, especially landscaping, as the unseasonably warm weather meant no snow events, and hence, lower expenses.

Investment income was also reported as favorable to the budget, due to the recent positive changes in the stock market.

NEXT MEETING

The next MVF Board of Directors meeting is scheduled for 7 p.m. on Thursday, March 23, at North Creek Community Center, 20125 Arrowhead Road. The Annual Meeting is scheduled immediately following the Board meeting (approximately 7:45 p.m.) on Thursday, March 23, also at North Creek. Residents are invited and encouraged to attend either or both meetings. The Annual Meeting will honor community volunteers and staff, as well as highlighting 2016 accomplishments and financials. The meeting agenda and information packet will be available online at www.montgomeryvillage.com the week of the meeting.

MVF Financial Reports - January 2017

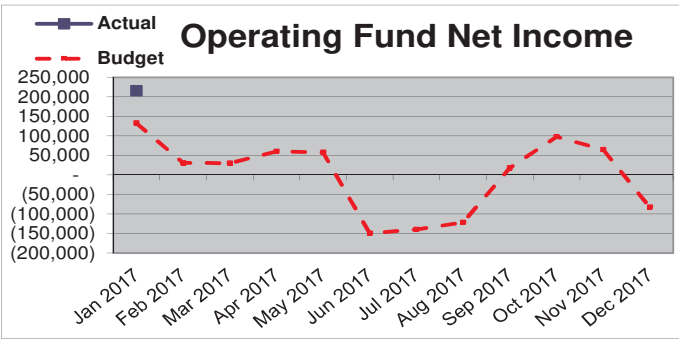
OPERATING FUND - STATEMENT OF INCOME & EXPENSE

	January 2017			YTD Jan 2017		
	Actual	Budget	Variance (Unfav)	Actual	Budget	Variance (Unfav)
Revenue:						
Assessments	518,268	518,251	17	518,268	518,251	17
Assessment Fees	46,432	41,621	4,811	46,432	41,621	4,811
Transfer Fees	1,800	2,415	(615)	1,800	2,415	(615)
Disclosure Fees	6,890	8,240	(1,350)	6,890	8,240	(1,350)
Advertising revenue	3,707	8,226	(4,518)	3,707	8,226	(4,518)
Pool Memberships/Rental Fees	7,776	7,699	76	7,776	7,699	76
Camps & Classes	25,979	17,667	8,312	25,979	17,667	8,312
Management Fees	65,936	65,934	2	65,936	65,934	2
Capital Contribution fee	7,332	7,958	(626)	7,332	7,958	(626)
Other Income	14,163	4,123	10,040	14,163	4,123	10,040
Total Revenue	698,283	682,134	16,149	698,283	682,134	16,149
Personnel Costs:						
Salaries & Wages	200,744	244,874	44,130	200,744	244,874	44,130
Payroll Taxes & Benefits	68,743	78,152	9,409	68,743	78,152	9,409
Personnel Costs	269,487	323,026	53,539	269,487	323,026	53,539
Business Expenses	5,579	7,096	1,517	5,579	7,096	1,517
Office Supplies	3,963	4,700	738	3,963	4,700	738
Program/Maint Supplies	3,968	4,400	432	3,968	4,400	432
Occupancy	19,238	19,307	69	19,238	19,307	69
Office Expenses/Svc Contracts	25,819	25,630	(189)	25,819	25,630	(189)
Equip Maintenance	1,126	1,750	624	1,126	1,750	624
Vehicle Expenses	1,215	1,817	602	1,215	1,817	602
Financial & Legal	8,472	14,592	6,120	8,472	14,592	6,120
Insurance	(10,927)	(16,216)	(5,289)	(10,927)	(16,216)	(5,289)
Printing	3,612	4,583	971	3,612	4,583	971
Landscape/Maintenance	46,837	52,320	5,483	46,837	52,320	5,483
Security	6,028	7,409	1,381	6,028	7,409	1,381
Other	16	-	(16)	16	-	(16)
Operating Costs	114,944	127,388	12,443	114,944	127,388	12,443
Contribution to Reserves	90,830	90,830	(0)	90,830	90,830	(0)
Contribution to CCF	7,332	7,958	626	7,332	7,958	626
Purchases of Assets	-	-	-	-	-	-
Other Equity Transfers	-	-	-	-	-	-
Restricted Donations	-	-	-	-	-	-
Reserve/capital	98,162	98,788	626	98,162	98,788	626
Operating Expenses	482,593	549,202	66,609	482,593	549,202	66,609
Excess/Deficit Revenue	215,690	132,933	82,757	215,690	132,933	82,757

MVF BALANCE SHEET

For the Period Ended January 31, 2017

	Current	Prior Year
ASSETS		
Cash & Cash equiv	2,582,150	2,816,690
Investments	5,896,846	5,432,846
Due from Reserves	699,561	123
Assessment Receivables	806,314	926,736
Other Receivables	97,862	93,292
Current Assets	10,082,734	9,269,686
Gross Fixed Assets	13,399,043	13,799,352
Accumulated Depreciation	(6,047,631)	(7,294,344)
Fixed Assets	7,351,412	6,505,007
Other Assets	70,133	60,705
Assets	17,504,279	15,835,398
LIABILITIES & EQUITY		
Due to Operating	699,561	123
Payables	508,604	600,662
Sunstream Cap Lease	122,088	-
Deferred Revenue Liab	1,243,170	1,187,445
Liabilities	2,573,423	1,788,229
Undesignated Reserves	1,943,060	1,679,979
Designated Reserves	12,987,791	12,240,725
Equity	14,930,851	13,920,704
Liabilities & Equity	17,504,279	15,835,398



IN THE NEWS

Montgomery Council seeks applicants for Montgomery County Planning Board

The Montgomery County Council is seeking applicants to fill a vacancy on the Montgomery County Planning Board. The second term of Marye Wells-Harley (D) will expire on Wednesday, June 14, and she is not eligible for reappointment.

Applications must be received no later than 5 p.m. on Wednesday, April 12.

Members serve four-year terms and are limited to two full terms. No more than three members of the Planning Board may be from the same political party, and each member must be a resident and registered voter of Montgomery County when appointed. This position may be filled by a Democrat, Republican, a voter who declines to affiliate with a party, or a member of another party officially recognized by the Montgomery County Board of Elections.

In addition to Ms. Wells-Harley, current board members are Chair Casey Anderson (D), Norman Dreyfuss (R), Gerald Cichy (R) and Natali Fani-Gonzalez (D). Annual compensation for board members is currently \$30,000, and the chair currently earns \$201,500.

The Planning Board serves as the council's principal adviser on land use planning and community planning. Planning Board members also serve as commissioners of the

Maryland-National Capital Park and Planning Commission.

The Planning Board's responsibilities with regard to planning include preparation and amendment of the County General Plan; preparation and amendment of master plans and functional plans; formulation of subdivision regulations; preparation of or recommendations on text amendments to the County Zoning Code; implementation of the subdivision process by reviewing and approving all preliminary plans, site plans and other plans for development; advice on the planning implications of capital facilities and programs of the county government, Montgomery College, the Washington Suburban Sanitary Commission and Montgomery County Public Schools; commenting, under its mandatory referral authority, on plans for public facilities of local, state and federal agencies; and approval of the work program and the annual operating budget for the Planning Department and the commission's bi-county offices.

The Planning Board sits as the Park Commission and approves the annual Parks Department operating budget and Capital Improvements Program (CIP); land acquisition contracts and major development contracts for parks; development plans for individual

park facilities; policies for park operations; and park user fees.

The Planning Board meets all day, including into the evening, every Thursday and will schedule other meetings, as needed. The entire Maryland-National Capital Park and Planning Commission meets the third Wednesday of every month. On average, a Planning Board member may spend two full days a week in scheduled and informal meetings. Additionally, substantial time is required for preparatory work and other activities related to Planning Board responsibilities.

APPLICATION PROCESS AND DEADLINE

Letters of application expressing interest, including a résumé listing professional

and civic experience, political party affiliation, home and office telephone numbers and an e-mail address, should be addressed to: Council President Roger Berliner, County Council Office, Stella B. Werner Council Office Building, 100 Maryland Avenue, Rockville, Maryland 20850. Applications can also be submitted via e-mail to county.council@montgomerycountymd.gov.

Letters of application and résumés are made public as part of the appointment process, and are available for public review. The interviews are conducted in public and will be televised.

Letters with résumés must be received no later than 5 p.m. on Wednesday, April 12. It is the council's policy not to consider applications received after the deadline. After the

closing date, councilmembers will review the letters of application and select applicants for interviews to be held soon thereafter.

FINANCIAL DISCLOSURE

A financial disclosure statement of assets, debts, income and family property interests will be required to be filed by each applicant. The financial disclosure form will be sent to applicants after receipt of letter of application. Only the financial disclosure statement of the ultimate appointee will be made available to the public; all others will be returned to the applicants.



MONTGOMERY VILLAGE FOUNDATION

Department of Recreation, Parks & Culture

Pool Manager*

Starting at **\$14.12/hr.****

Must be at least 18 years of age, have at least one season of experience in an assistant pool manager position and current Montgomery County pool operator license. **American Red Cross lifeguarding, CPR/AED for lifeguards and first aid certificates required.**

Assistant Pool Manager*

Starting at **\$12.62/hr.****

Must be at least 18 years of age, have at least two seasons of experience in a lifeguarding position and current Montgomery County pool operator license. **American Red Cross lifeguarding, CPR/AED for lifeguards and first aid certificates required.**

Senior

Lifeguard*

Starting at **\$12.12/hr.**

Must be at least 17 years of age, have at least two seasons of experience in a lifeguarding position and current Montgomery County pool operator license. **American Red Cross lifeguarding, CPR/AED for lifeguards and first aid certificates required.**

Lifeguard*

Starting at **\$11.15/hr.****

Must be at least 15 years of age. **American Red Cross lifeguarding, CPR/AED for lifeguards and first aid certificates required.**

Desk Attendant*

Starting at **\$8.60/hr.**

Must be at least 15 years of age, be able to work independently, learn all policies associated with the position and have ability to effectively convey the information to public. Working outdoors as a pool slide attendant may be included as part of the duty.

Swim Instructors

Swim Instructor positions available. For more information, contact Lauren Hydorn at 240-243-2361 or e-mail lhydorn@mvf.org.

Staying Aware in the Village

The following is information taken from the Recent News Summaries of the Montgomery County Police Department. The report is not a complete listing of every incident.

AGGRAVATED ASSAULT

An aggravated assault occurred in the area of Contour Road and Lost Knife Road at approximately 6:30 p.m. on February 1. One suspect displayed a weapon and assaulted the adult male victim.

Suspects: 5 males, races and ages unknown

THEFTS FROM VEHICLES

Multiple thefts from vehicles occurred during this reporting period. Affected streets include Cambridge Court, Capehart Drive, Crested Iris Way and Cove Ledge Court. No force; unknown means of entry into the vehicles; coins and property were taken.

For more information, contact Petra Padilla at 240-243-2363, or e-mail ppadilla@mvf.org. Applications are available at the MVF Office, 10120 Apple Ridge Road, Montgomery Village, MD 20886 or online at www.montgomeryvillage.com (go to MVF and click on Job & Volunteer Opportunities). *Contract completion bonus. **Salary based on experience. EOE

All positions open until filled.

IN THE NEWS

Watkins Mill Interchange update

According to Maryland State Highway Administration (MSHA) Transportation Design Engineer Armando Henriquez, P.E., the Watkins Mill Interchange project is being fully funded by the state.

The project was advertised on February 21 and the bid

opening is expected during summer 2017.

The scope of work includes a full diamond interchange, with four ramps to/from I-270 and Watkins Mill Road, and ramp re-alignment towards MD 124. This scope is consistent with the previous advertisement of 2015.

For more project information from the MSHA, visit <http://apps.roads.maryland.gov/WebProjectLifeCycle/ProjectInformation.aspx?projectno=MO3512115> or contact Armando Henriquez at 410-545-8876 or e-mail ahenriquez@sha.state.md.us.

Contribute to MVF's 26th annual scholarship fund drive for Village high school seniors

Since 1991, the Montgomery Village Foundation (MVF), in partnership with Gaithersburg and Watkins Mill high schools, has awarded scholarships to deserving Village high school seniors totaling more than \$48,000.

Scholarships are awarded to Watkins Mill and Gaithersburg high school students who have demonstrated outstanding scholastic achievement and participated in community or civic activities. Applicants are screened by a committee at each high school, with the Foundation's Scholarship Committee making the final selections in May. As established by the MVF Board of Directors, all

contributions are voluntary, and no assessment dollars are used to fund the program.

The scholarship fund was originally launched by the MVF Board of Directors to coincide with the 25th anniversary of Montgomery Village and MVF. This year's fund totals and recipient names will be announced in late spring at school ceremonies and in the *Montgomery Village News*.

Donations by check must be made out directly to either Watkins Mill High School PTSA Scholarship Fund or to the Gaithersburg High School PTSA Scholarship Fund. To make a tax-deductible contribution to the fund for either

school, fill out the form below and return it to MVF at the address indicated.

The MVF Scholarship Fund is an excellent opportunity to bring Village residents and the WMHS and GHS school communities closer together. The impact these scholarships can make goes beyond financial assistance. They represent a commitment to our young people, a recognition of achievement and an investment in our future.

For scholarship applications, qualification requirements and deadlines, students should see the scholarship coordinator in their respective schools

North Creek Summer Activity Center ages 6 to 13



June 19 to Aug. 11
Monday to Friday
8:30 a.m. to 5 p.m.
(No drop-in Tuesday,
July 4)

\$360/Resident
\$441/Non-resident
Payment plan available
to be paid in full by
June 12

5004.301

North Creek Community Center
20125 Arrowhead Road

For more information or to register,
visit www.montgomeryvillage.com
or call 301-948-0110.

Scholarship Fund Contribution Form

Montgomery Village Foundation, Inc.

Enclosed is my contribution of \$_____ for the
Montgomery Village Foundation Scholarship Fund.

Please make checks payable to either
Watkins Mill High School PTSA Scholarship Fund or
Gaithersburg High School PTSA Scholarship Fund.

Name _____

Address _____

City _____ State _____ Zip _____

Please mail to:
Montgomery Village Foundation, Inc.
Scholarship Fund Drive
10120 Apple Ridge Road
Montgomery Village, MD 20886



Jane W Reilly Ins Agcy Inc
Jane Warfield Reilly, Agent
19636 Club House Road, Suite 120
Montgomery Village, MD 20886
Bus: 301-948-6061
Hablamos Español

Hello, neighbor!

Please stop by and say, "Hi!"
I'm looking forward to serving
your needs for insurance and
financial services.
**Like a good neighbor,
State Farm is there.®**
CALL ME TODAY.

 **State Farm™**


1001013.1

State Farm, Home Office, Bloomington, IL

Stay Connected

www.montgomeryvillage.com

ARCHITECTURAL STANDARDS



Architectural Standards

The Architectural Standards Department is here to answer your questions about making changes to the exterior of your property. Architectural Standards is responsible for approving exterior changes—anything from replacing a door to building a deck or shed, to additions on your home. Call Heather Sharpless at 240-243-2355 or e-mail hsharpless@mvf.org or Erika Hottinger at 240-243-2351 or e-mail ehottinger@mvf.org. Questions may also be mailed to Montgomery Village Foundation, 10120 Apple Ridge Road, Montgomery Village, MD 20886, or faxed to 301-990-7071. Specific architectural standards criteria for each community in Montgomery Village are available at www.montgomeryvillage.com.

Window styles and their importance to the appearance of your house

Windows are important, as they allow natural light into your home during the day and let in air to your home to keep it fresh. Windows help define the style of your house, whether it is traditional or contemporary.

Traditional-style windows, often known as colonial style, are evenly spaced, uniform and generally have smaller panes of glass. These windows sometimes have wider trim and are often fitted with shutters. Colonial windows will have top and bottom sashes, usually with either six, nine or 12 panes each.

The colonial grids, or mullions and mutins, were devised to make a single window look like it has several smaller panes

of glass and replicate the original colonial window. These windows provide symmetry and order to a traditional-style house and would look out of place in a contemporary-style house.

Contemporary-style windows, often known as slider-style windows, are generally used in contemporary-style houses. Slider-style windows are windows that open from side to side and not up and down the way colonial-style windows open. Contemporary windows do not have mullions or mutins (the divider trim pieces that create several smaller panes of glass within a single window) like their colonial-style counterparts.

Slider-style windows offer

two or three large panes of glass to allow unobstructed views and clean simple lines. Slider-style windows accent the contemporary-style house that features simple geometric lines and asymmetrical shapes. Colonial-style windows would not complement a contemporary-style house as they would be too highly detailed and symmetrical to fit within the contemporary style.

Remember to consider the style and color of windows that you have currently in your house when contemplating replacement windows. These styles and colors should be retained and are important to maintaining the specific design style of the exterior of your home.

All replacement windows and patio doors are required to be approved by the Architectural Review Board and the Architectural Standards Department. Please apply before you purchase and install your replacement windows. For more information or help with the replacement process, call 301-948-0110.



American Red Cross Lifeguarding Course

Lifeguard Training Course

(Includes CPR/AED and First Aid)

Montgomery Village Resident: \$185, Non-resident: \$195



The American Red Cross Lifeguard Training course will certify you in Lifeguard Training, CPR/AED for the Professional Rescuer, and First Aid. **Students must be 15 years old by the last day of the course** (proof of age required) and **pass a pre-screen test** (300-yard continuous swim with rhythmic breathing using front crawl or breast stroke; 10 lbs. brick retrieval within one minute forty seconds; and tread water using legs only for two minutes) on the first pool day in order to continue participation in class. If you do not pass the pre-screen, you will be issued a full refund. Space is very limited. Class sessions will be held at the **Rockville Swim & Fitness Center (355 Martins Lane, Rockville)**. A detailed course schedule/syllabus will be provided on the first day of class. **Students MUST attend all class sessions as scheduled. Class is co-taught with the City of Rockville.**

Successful class participants are encouraged to apply for lifeguard positions with the Montgomery Village Foundation. We offer competitive pay, a completion bonus and training course reimbursement opportunities—call for details.

REGISTRATION INFORMATION: You can register online at www.montgomeryvillage.com, in person at the Montgomery Village Foundation Office (10120 Apple Ridge Road, Montgomery Village, MD 20886), or by calling 301-948-0110. **Make checks payable to:** “Montgomery Village Foundation.” Payment is due at the time of registration. If you have any questions, call 240-243-2363 during business hours or e-mail ppadilla@mvf.org.

4015.202

(Registration closes on Thursday, April 6)
MCPS Spring Break

DATE	TIME
Monday, April 10	9 a.m. to 1 p.m.
Tuesday, April 11	9 a.m. to 4 p.m.
Wednesday, April 12	9 a.m. to 4 p.m.
Thursday, April 13	9 a.m. to 4 p.m.
Friday, April 14	10 a.m. to 1 p.m.

4015.204

(Registration closes on Wednesday, April 19)

DATE	TIME
Friday, April 21	6 to 10 p.m.
Saturday, April 22	2:30 to 9:30 p.m.
Sunday, April 23	6 to 9:30 p.m.
Monday, April 24	6 to 9 p.m.
Saturday, April 29	3 to 10 p.m.
Sunday, April 30	6 to 9 p.m.

HOMES CORPORATIONS

HOMES CORPORATIONS & CONDOMINIUM ASSOCIATIONS

Homes corporation and condominium association articles are provided by representatives or board members from the corporations and associations. The information and opinions provided within these articles do not necessarily reflect the views of the Montgomery Village Foundation, its Board of Directors, representatives or staff. Residents with specific questions or concerns about the information contained in these articles should contact their community manager or the author of the article.

SOUTH VILLAGE SCENES

Report illegal dumping to management

by the South Village Board of Directors

Throughout all communities of South Village, illegal dumping of bulk trash has been noted and has cost the association thousands of dollars to remove. Bulk trash can be picked up for free by contacting Potomac Disposal at 301-294-9700 or by placing an online service request at www.potomacdisposal.com. Some restrictions apply when requesting pickup for metal items such as appliances. Trash collection is scheduled for Mondays and Thursdays. Trash for collection must not be put out earlier than 7 p.m. on the evening before scheduled pickup.

If you are unaware of where to place trash out, please view South Village's Trash Storage, Collection and Disposal Rules and Guidelines which can be found online at www.montgomeryvillage.com, or request an electronic copy by calling community management at 240-243-2326. Trash scattered throughout the community not only decreases property values, but attracts rodents and

is an unsightly eye sore. Please do your part by following South Village's Trash policies and Montgomery County laws.

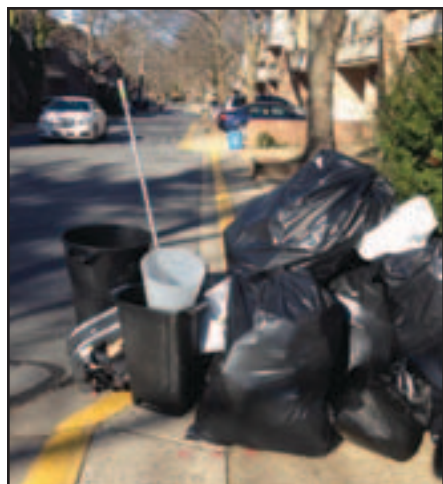
It is illegal to dump trash on community property in Montgomery County. Residents witnessed dumping trash will be reported to Montgomery County and may face fines up to \$500. Should you witness a neighbor improperly disposing of trash, please do not hesitate to contact the office. Residents may report anonymously.

COMMUNITY CLEANUP

A community cleanup will be hosted by Montgomery County on Saturday, March 11 from 10 a.m. to noon. Volunteers will meet at the tot lot on Royal Bonnet Circle. All residents are welcome to join!

Thank you, neighbors of South Village, for doing your part in combating the trash problem.

South Village Scenes: for residents of Center Stage, Dockside, Grover's Forge, Hamptons, Millrace, Nathan's Hill and Walker's Choice.



Trash scattered throughout the community not only decreases property values, but attracts rodents and is an unsightly eye sore. Please do your part by following South Village's Trash policies and Montgomery County laws.



EAST VILLAGE ECHO

Police Academy responds to siren noise

by David Cline

Sirens always catch our attention as they're designed to do so. When we're driving, sirens alert us to pull over. If we're at home, sirens alert us to a local emergency. However, a few weeks ago, sirens could be heard for several hours in East Village. It caused some concern and alarm from residents. There was no emergency—it turned out that East Village's newest neighbor, the Public Safety and Training Center (PSTA), was training police officers. Still, the noise from the sirens over a 4-hour period caused a number of residents to complain.

In response to East Villagers' complaints, the PSTA was asked to host an informational meeting for residents. The meeting was facilitated by MVF Executive Vice President David Humpton and East Village and MVF Board member Glenn Gargan. Approximately 80 residents attended the meeting on February 15. Police Captain Ed Pallas and Fire Captain Adam Jones shared information on the purpose of using sirens for new police officers. The primary purpose of using sirens outside is to train officers to be as safe as possible when responding to emergency situations.

"We want the officers to have muscle memory on how to use different types of sirens to catch drivers' attention. When using sirens, we want to keep the public and officers safe as they speed through traffic when responding to a police call," Captain Pallas remarked.

Captain Pallas explained that having new police recruits go through their extensive training is not only in the best interest of the public, it's a Maryland State requirement that officers go through live training with lights and sirens.

The good news for the residents attending the meeting was hearing that the live training will occur only twice a year for each graduating class. Pallas stressed more than once that the Public Safety Training Academy wants to be a good neighbor, while fulfilling its mission to train Montgomery County Police Officers at the highest level. He mentioned that in response to concerns about residents who work nights and get their best daytime sleep in the morning hours, he will work to have the sirens used in the later part of the day whenever possible. Captain Pallas promised that he'd make sure East Village residents would have a schedule for future training dates when sirens will be used outside.

On a personal note, as an East Village resident, I was also affected by the sound of the sirens when the PSTA first sounded the sirens. I had wondered if there had been a large accident or some other emergency in our area. Moving forward, I believe it will be helpful when knowing the sirens will be used and I make personal decisions to lessen the impact. I can see the next training session as an excuse to make another trip to the local hardware store, a movie or something else I enjoy.

However, it will have an impact, especially if we, as residents, might be required to stay home or want to do yard work when the sirens are being used. It is my hope knowing the importance of what the police are doing for our safety will help. Still, please be open with your suggestions in the future so we can have a good relationship with the PSTA.

RECENT STORMS

During a recent windstorm, 10 trees were felled by heavy winds. Two trees fell on houses and one on a car. All three were quickly removed by Bright-View, our maintenance company, after calls to East Village Community Manager April Steward.

Unusually warm weather is saving thousands of dollars in the East Village budget for snow removal. If you're new to the area, or even a long time resident, it might be a little too early to put away those snow shovels. Local weather reporters are reminding everyone that the month of March has seen some of the biggest snowstorms in the D.C. area. Well, let's hope for an early spring anyway.

East Village Echo: for residents of The Downs, The Reach, The Estates, Essex Place II, Candle Ridge, Gablefield, Glenbrooke, Meadowgate, Ashford, Holly Pointe and Wethersfield.

GET GOOD SERVICE
FROM YOUR GOOD
NEIGHBOR.

WE LIVE WHERE YOU LIVE.™



Don't trust just anyone for your insurance and financial needs, see me:

Jane Warfield Reilly, Agent
19636 Club House Road, Suite 120
Montgomery Village, MD
301-948-6061



LIKE A GOOD NEIGHBOR,
STATE FARM IS THERE.®

statefarm.com
See Us - Home Office: Bloomington, IL

STAY CONNECTED WITH MONTGOMERY VILLAGE



www.facebook.com/MontVillageMD

Twitter: @MontVillageMD

HOMES CORPORATIONS

NORTH VILLAGE VIEW

Financial highlights of the Year 2016

by Jeanne Powell, North Village Homes Corporation Treasurer

Our pre-audited financial statements for 2016 have just been completed. This article summarizes our financial picture for the year ended December 31, 2016.

“Snowzilla 2016” dominated our finances for much of the year. The January 2016 blizzard cost \$75,000 against a snow

left on common grounds and maintaining our pet stations. The pet stations have been an important enhancement to our community, but both the pet waste bags and emptying the containers regularly are costly. We need everyone to do their part in not wasting bags. And please contact Potomac Disposal to arrange pickup of large trash items!

CONTRIBUTION TO RESERVES AND CAPITAL EXPENDITURES
We added \$162,000 to our Capital Reserves during 2016, including \$130,000 from assessments, \$25,600 from interest on our investments and \$6,460 received from the county’s roadway reimbursement pro-

	2016 Actual (pre-audit)	2016 Budget	2015 Actual
Income (Assessments and Other)	\$641,827	\$607,150	\$617,521
Operating Costs			
• Maintenance	\$226,827	\$191,000	\$192,527
• Security and Trash	115,785	115,000	84,361
• Non-Maintenance	141,933	171,150	136,111
Total Operating Costs	484,545	477,150	412,999
Net Income Before Contribution to Reserves	\$157,282	\$130,000	204,522
Contribution to Reserves (Including interest and roadway reimbursement)	162,080	130,000	159,176
Net Income	(\$4,798)	0	\$45,346

removal budget of \$25,000. We spent the rest of the year digging out financially. Fortunately, the rest of the year was quiet snow-wise, as is 2017, so far at least.

Also fortunately, we experienced savings in other areas, and we delayed spending in others. As a result, our final unaudited financial statements show only a small Net Loss of \$4,800 for the year. This is because non-maintenance costs were lower than budgeted by \$30,000, and although snow removal costs exceeded the budget by \$55,000, total maintenance costs exceeded the budget by only \$35,000.

MAINTENANCE EXPENDITURES

Tree removal was the largest non-contract maintenance item besides snow removal. We delayed tree work while recovering from the snow removal cost burden and reduced spending on tree removal from what had been budgeted. There are still many trees leaning dangerously or ill, but the situation in 2016 was less critical than in 2015. In 2015, we had spent \$42,000; in 2016, we spent \$23,000 against a \$32,000 budget. We have more tree work to do in early 2017.

We are experiencing an increase in non-landscaping maintenance costs, for example, removing bulk trash

We were able to do some plantings at entry signs. And we did spring and fall fertilization. We hope to upgrade plantings further in 2017 under our new landscape contractor. The small amount of snowfall so far in 2017 may free up some funds for more plantings.

TRASH AND SECURITY

Collectively, these items were on target with the budget, with security costs slightly exceeding the budgeted amount and trash collection slightly under budget. However, given that security costs with our new contractor were vastly higher than the prior year without showing benefit, we decided late in the year to change the security contractor again.

ADMINISTRATIVE (NON-MAINTENANCE) EXPENDITURES

Non-maintenance expenditures were significantly under budget and slightly above the prior year. We have continued to save on legal expense as a result mainly of changes in collections management at Montgomery Village Foundation (MVF). Water quality assessments have continued to be somewhat lower than budgeted. Pending the audit, bad debt expense is also much lower than budgeted. We anticipate this will hold because the delinquency rate has dropped with changes in MVF policies.

gram. At the end of 2016, we had over \$1,500,000 invested for replacement reserves.

We undertook no major capital projects during 2016. We replaced the severely deteriorated fence in Picton, and we performed some street and concrete repairs.

LOOKING FORWARD TO 2017

We have a few open items remaining from 2016. Among maintenance items, we need to do some fence repair, and we have a considerable list of trees needing attention. On the capital side, we see some additional asphalt repair and we want to replace lighting fixtures along walking paths. Our investment accounts are consistent with where our reserve study indicates we need to be.

If you have questions, contact Community Manager April Steward at 240-243-2344 or e-mail asteward@mvf.org.

North Village View: for residents of Essex Place, Highland Hall, McRory, Perry Place, Picton, Pleasant Ridge and Salem’s Grant.

STAY CONNECTED WITH MONTGOMERY VILLAGE

Rental Facilities in the Village

Looking for space for your party, celebration or sports practice? Montgomery Village residents who pay the MVF Fee can rent these centers for their non-alcoholic private parties or functions.

Lake Marion has a wood-floored room with a maximum capacity of 85 people, as well as a full-size gymnasium available for rent at Lake Marion.

North Creek is a tile-floored L-shaped room that may be divided into two smaller rooms. Maximum capacity is 125 people.

We are now accepting rental requests for functions to be held through April 2017. Fees for these facilities begin at \$50 per hour and require a \$250 security deposit. Requests must be submitted at least three weeks in advance. Potential renters can obtain a copy of the “Procedures on the Private Use of Facilities” and the “Private Rental Request Form” from the MVF Office, 10120 Apple Ridge Road or online at www.montgomeryvillage.com.

For more information, contact Lauren Hydorn at 240-243-2361 or e-mail lhydorn@mvf.org.

Lake Marion, 8821 East Village Avenue
85 people max.*

North Creek, 20125 Arrowhead Road
125 people max.*

*There is a maximum of 75 people allowed per rental during pool season.

19200 Montgomery Village Ave
Montgomery Village, MD 20886
301-740-3351
Dine-In • Carry-Out • Catering
www.ledopizza.com

MONDAY

Buy 1 Calzone
Get 1 Calzone
FREE

WEDNESDAY

KIDS EAT FREE

From our Just4Kids menu, 12 and under. Limited 1 Free Kids Meal per adult entree purchased.

Valid only at LEDO Pizza Montgomery Village.

HOMES CORPORATIONS

MIDDLE VILLAGE VOICE

Towing in Middle Village

by the Middle Village Board of Directors

The current Middle Village Parking policy states:

"All vehicles parked overnight in the community are required to display an MVHC parking tag/permit or they are subject to immediate towing. For purposes of these rules, overnight is defined as parking a vehicle in Middle Village anytime between 11 p.m. and 5 a.m."

"Parking tag/permit must be clearly/properly displayed, on the driver's side, facing the front windshield, on vehicles parked in a reserved parking space, or parked in the community overnight. Tags/permits can be hung from the rear view mirror or taped to the driver's side dashboard or front windshield, front side facing toward the windshield."

"Failure to properly display the current year's parking tag/permit will lead to immediate towing - even if vehicle is parked in the appropriate reserved parking space. No warnings or notifications will be issued."

The parking policy is available to view on the ComSource website at www.comsource.com.

ASSESSMENTS

We live in a community that requires every homeowner to pay assessment fees. Assessments are used to pay contractors for landscaping, snow removal, trash collection, collection of illegally dumped

trash, lighting, repairs on community property, etc. If you are a homeowner, you were provided with this information during closing.

Reminder: Assessments are due monthly. Your payment must be received by ComSource on or before the 15th of the month to avoid late charges. Your regular payments allow us to continue providing services to our community.

Homeowners who are delinquent with their assessment payments must pay their past due balance in full or make arrangements to pay them. The first step to making payment arrangements to contact Delphine Matthews at ComSource at 301-924-7355 or e-mail dmattthews@comsource.com.

BULK TRASH COLLECTION AVAILABLE ONCE A WEEK

Potomac Disposal, our trash collection vendor, will no longer collect our bulk trash. Do not place any bulk trash out for Potomac Disposal on Tuesdays or Fridays. Residents will be fined for placing bulk trash out on the wrong day. The new vendor information and detailed instructions was mailed to you by ComSource.

There is a \$25 reward for picture or video proof of violations to the trash policy that identifies the violators. Picture or video proof is required to

collect a reward, and some restrictions apply. All reports will remain anonymous. Trash policy violations include, but are not limited to:

1. Placing trash out in plastic bags instead of a trash receptacle with a lid.
2. Trash/recycling out on inappropriate days/non-pickup days.
3. Placing trash out on common area spaces instead of in front of home.

- o Trash includes loose trash, bagged trash, trash in cans and bulk trash.

Log in at www3.senearthco.com to view or download the entire trash policy if you have an online account. Click "Community Information," then "Property Information" to view the current trash policy. Contact Shirley Umali at sumali@comsource.com if you would like to register for a Sourcelink account.

PARKING/SNOW REMOVAL RULES

Certain locations within Middle Village are designated as snow storage areas and are designated with "No Parking When Snow Is Forecast" signage. Anyone who parks in these areas when snow is forecast or falling will be immediately towed without notice.

In the case of snowfall that is 3 inches or above, residents may use a construction cone marked with their address to hold a space only if he/she

cleared snow from the space. Only one cone is permitted per home/address, and can only hold a space for up to four days, or when two tires of a vehicle rest on the ground, instead of snow, in spaces that have not been shoveled, whichever occurs first. More than one cone with the same address will be removed and discarded. Additionally, cones that do not have the address clearly written on them, or that remain in spaces for more than the permitted timeframe as described above will be removed and discarded. Any other objects (chairs, trashcans, etc.) placed in a space will be removed and discarded.

2017 PARKING TAGS

Please note, effective January 1, homeowners/tenants will now be towed without notice if they are parked in their reserved space, any time of the day or night, and displaying an expired parking tag or no tag, or are parked during the overnight hours in a non-reserved space and are not displaying a tag or are displaying an expired tag.

If you are a new resident and do not know your assigned parking space number or have not picked up your parking tag, contact Delphine Matthews at ComSource at 301-924-7355 or e-mail dmattthews@comsource.com.

Parking tags will not be mailed to residents.

SOURCELINK/ACCOUNT ACCESS

Please contact Shirley Umali at sumali@comsource.com to create a Sourcelink account. Use Sourcelink to pay assessment balances quickly and easily if you are an owner. You can view your account information 24/7, and access community documents, including parking policies and architectural guidelines. You will also be able to receive updates on any new policies quickly via e-mail. Landlords can provide online access to tenants by adding them as an additional user and setting permissions according to preference.

CONTACTING COMSOURCE

ComSource is our management company. If you have a comment or complaint, please include your name, address, phone number, location of issue/problem and specific details in your correspondence or when you are leaving a phone message for the property manager. Contact ComSource at 301-924-7355 or e-mail dmattthews@comsource.com or sumali@comsource.com.

The next MVHC board meeting is scheduled for 7 p.m. on Tuesday, March 28 in the Thomas Choice Clubhouse, 19401 Brassie Place.

Middle Village Voice: for residents of Thomas Choice West and Clubside.

WHETSTONE Afterschool Club

5004.110

Monday through Friday
3:30 to 6 p.m.
now through June 16

\$5/Day, 5 day minimum

Whetstone Community Center
19140 Brooke Grove Court

www.montgomeryvillage.com

To ADVERTISE in the Village News

Call 240-243-2359 or

e-mail hbenitez@muvf.org

VISIT US AT THE TW PERRY HARDWARE STORE, WE ARE HAPPY TO HELP YOU!



Stop by our store and let us help you on your upcoming projects! Our sales staff have product training to assist you quickly and efficiently.

Paint • Hardware • Power Tools
Decking & Railing • Seasonal Supplies
Windows • Doors • Lumber • Millwork



8101 Snouffer School Road
Gaithersburg, MD 20879
M-F 6AM to 5PM SAT 7AM - 3PM
301-840-9600 - www.twperry.com



FREE ADMISSION

Refreshments • Vendor Door Prizes • Helpful Information

Your resource for:

- Interior Upgrades
- HVAC Repair
- Plumbing
- Carpet
- Flooring
- Kitchen Remodeling
- Bath Remodeling
- Contractors working in your neighborhood
- Information on updates that homeowners are requesting

Vendors attending the show include:

A to Z Turnover Services • Bath Fitter
 Beautiful Home Services Inc. • Capital Remodeling Inc.
 CHF Deck Co. • Divine Landscaping, Inc.
 GAC Services • Gutter Helmet Systems • Homefix
 Homespire Windows, LLC • Kitchen Saver
 Mont. County Department of Environmental Protection
 Nu Look Home Design
 MVF Architectural Standards Department
 MVF Department of Recreation, Parks & Culture
 Power Home Remodeling • Renewal by Andersen
 Thompson Creek Window Company
 Tri County Fence & Decks • TW Perry
 Wellman General Contracting

Experience the
 Interactive Energy Exploration
 event for all ages with
 arcade-style games from the
 Montgomery County Department
 of Environmental Protection



Saturday, March 18 • 9 a.m. to 3 p.m.
 Lake Marion Community Center • 8821 East Village Avenue



For more information, call Humberto Benitez at
 240-243-2359 or e-mail hbenitez@mvf.org.

www.montgomeryvillage.com

RECREATION

Counselor-In-Training/ Youth Leadership Workshop

Get on the fast track to MVF's Counselor-In-Training Program! Youth Leadership Workshop is a development program for teens ages 13 to 17 that combines interactive workshops with the fun atmosphere of a summer day camp! Those who successfully complete this workshop will be given priority, after returning CITs, during the Counselor-In-Training selection process in early May, age permitting (participants must be 14 years old by the first day of the camp session of which they are placed).

Participants will engage in exciting and empowering activities, and focus on personal growth and positive leadership skills. The goals of this program are for youth to learn skills to effectively lead others in activities and feel confident in their problem solving skills; both independently and

in a team setting. Youth Leadership Workshop participants will have the opportunity to earn up to 12 SSL hours planning activities and interacting with campers at MVF Spring Break Camps.

Join the fun from 9 a.m. to 4 p.m. Tuesday, April 11 through Thursday, April 13 at Lake Marion Community Center, 8821 East Village Avenue. This program costs \$65/Resident or \$75/Non-resident. For more information, call Melanie Maggi at 240-243-2338 or e-mail mmaggi@mof.org.



Creative Discovery Open Houses



**Wednesday, March 8, Friday, March 24
and Wednesday, March 29
9:30 to 10:30 a.m.**

**Whetstone Community Center
19401 Brooke Grove Court**

MVF invites prospective students, ages 2 to 4, and their families to join us for a morning of learning in the Creative Discovery schoolroom! Teachers Mrs. Arastu and Mrs. Mistrik will welcome children to join in our daily morning routine alongside current stu-

dents, allowing them to get a feel for the classroom and the school year ahead. Prior to leaving, parents will have the opportunity to talk more with teachers and ask questions about the program and registration process before leaving. Prospective 4's and

their families only on Friday, March 24.

Can't attend one of our Open Houses? To schedule a personal tour, call Melanie Maggi at 240-243-2338 or e-mail mmaggi@mof.org.



Register Online
www.montgomeryvillage.com

**for ages 8 to 12
1 to 4 p.m.**

Hurley Park Pool
20737 Highland Hall Drive



Jump in and soak up the fun! Participants will enjoy an afternoon of hands-on activities in the water and a look into the pool filtration system and more. In-water activities will include canoe safety, team raft building and raft races! Register today for the coolest way to heat up your summer! **All campers must demonstrate the ability to swim one length of the pool in a safe manner without touching the wall or bottom of the pool on the first day of camp and must be comfortable in water that exceeds their height.** *Please note this camp is not intended to be a swim lesson program. Please bring a bagged lunch.

4516.308

**Monday, July 10
to Friday, July 14**

\$119/Resident, \$129/Non-resident



For more information or to register,
e-mail lhydorn@mof.org or call 240-243-2361.



RECREATION

Whetstone Afterschool Club

Students in grades K to 5 can have afterschool fun in a well-supervised and friendly environment with sports, games, arts and crafts and more! MVF staff will walk with registered program participants from Whetstone Elementary School to Whetstone Community Center, 19140 Brooke Grove Court, immediately after school dismissal.

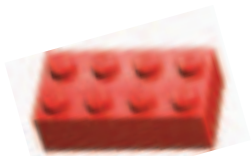
Registration is available online with flexible options. Participants can attend every day or just occasionally. Whetstone Afterschool Club runs from 3:30 to 6 p.m., Monday to Friday, through June 16 (no club when MCPS is closed).

For more information or to register, call 301-948-0110 or visit www.montgomeryvillage.com.

Lego Block Party

Join us at this fun event for the whole family! In addition to tables of Legos for free-building, Play-Well TEKnologies will be instructing participants on how to make "pull back cars" before taking on various obstacles. We'll also be building a giant tower — as tall we can get it!

This family event is for children and adults ages 5 and older. Build some fun from 7 to 9 p.m. on Friday, March 24 at North Creek Community Center, 20125 Arrowhead Road. Early registration is encouraged; adults are free, \$15/Resident child and \$20/Non-resident child.



Take advantage of Summer Camp Early Bird Discounts!

The Montgomery Village Foundation (MVF) Department of Recreation, Parks and Culture offers fantastic opportunities at established camps for youth ages just-under-4 to 12. Each week, campers will make friends, enjoy live performances, go on field trips, participate in active games, go swimming, create arts and crafts projects, participate in science experiments and of course, have fun! Camp Tiny Feet offers swimming lessons at no additional cost, and camps Soaring Stars and Racing Wind have a new afternoon swim lesson option!

New this summer are themed camp weeks, each with a special guest or awesome field trip!

Early bird pricing is still available, but don't delay! The special 10 percent discount ends on Wednesday, March 15!

Camps Soaring Stars for ages 6 to 8 and Racing Wind for ages 9 to 12 are both located at Lake Marion Community Center, 8821 East Village Avenue. The focus is on fun with challenging activities, games, exciting field trips and special events. Four and 5-year-olds have a blast at Camp Tiny Feet, a special morning only camp that includes swim lessons.

For the complete Summer Camp Guide, more information or details, visit www.montgomeryvillage.com or call 301-948-0110. Online registration is available.



SPRING BREAK CAMPS

IN MONTGOMERY VILLAGE




Monday, April 10
through
Thursday, April 13

9 a.m. to 4 p.m.

Lake Marion Community Center
8821 East Village Avenue



END-OF-SUMMER SPECIALTY CAMPS

Lake Marion Community Center, 8821 East Village Avenue

Enroll in two camps in the same session to make a full day of fun! Campers staying for the full day should bring a non-perishable lunch to eat during the supervised break between camps.

 <p>LEGO® STEM</p> <p>Ratchet up your imagination with tens of thousands of LEGO®! Build engineer-designed projects such as motorcycles, castles, airplanes and carnivals. Then use special pieces to create your own unique design! New and returning students can explore the endless creative possibilities of the LEGO® building system with the guidance of an experienced PlayWell instructor.</p> <p>4007.301 Intro to STEM with Lego Summer 2 NEW! Ages 5 to 7 Monday, Aug. 21 to Friday, Aug. 25 9 a.m. to noon \$180/Resident \$190/Non-resident</p> <p>4007.302 STEM Challenge Summer 2 NEW! Ages 8 to 12 Monday, Aug. 21 to Friday, Aug. 25 1 to 4 p.m. \$180/Resident \$190/Non-resident</p>	 <p>Tiny Chefs</p> <p>Campers push the limits on the snack concept and prepare a variety of wholesome, delicious and unique snacks. This is not your mother's PB&J! Chefs prepare a variety of bite-size munchies, like chicken salad cups, homemade granola bars, roasted red pepper humus with homemade pita chips and more! No one goes home hungry!</p> <p>4007.305 Ages 5 to 7 Monday, Aug. 21 to Friday, Aug. 25 1 to 4 p.m. \$180/Resident \$190/Non-resident</p> <p>4007.304 Ages 8 to 12 Monday, Aug. 21 to Friday, Aug. 25 9 a.m. to noon \$180/Resident \$190/Non-resident</p>	 <p>Under the Sea</p> <p>Campers 5 to 7 years old will make a big splash and learn all about jellyfish, octopuses, dolphins, whales and even mermaids! There's nothing fishy about using cool tools and materials to create fun paintings, collages, sculptures and more.</p> <p>4004.304 Ages 5 to 7 Monday, Aug. 28 to Friday, Sept. 1 1 to 4 p.m. \$180/Resident \$190/Non-resident</p> <p>Digital Doodles</p> <p>8 to 12 year old campers will learn about famous photographers, digital cameras, photo printing and lapse motion animation, with a focus on how to create a photography set up and using photographs in artwork.</p> <p>4004.309 Ages 8 to 12 Monday, Aug. 28 to Friday, Sept. 1 9 a.m. to noon \$180/Resident \$190/Non-resident</p>	 <p>Club SciKidz</p> <p>Science is as vital as reading, writing and arithmetic! This action packed week will allow campers to explore what it means to be a scientist. Investigate evolution and biology using hands on experiments and current scientific technology with fellow lab partners in the Lake Marion Lab!</p> <p>4005.325 Ages 5 to 7 Monday, Aug. 28 to Friday, Sept. 1 9 a.m. to noon \$180/Resident \$190/Non-resident</p> <p>4005.326 Ages 8 to 12 Monday, Aug. 28 to Friday, Sept. 1 1 to 4 p.m. \$180/Resident \$190/Non-resident</p>
--	---	---	--






For more information or to register,
e-mail lhydorn@mfv.org or call 240-243-2361.

KIDS PAGE



MV Kids learn about Ice Hockey

Whether you play ice hockey or are just a fan of watching the teams on TV, there are some very interesting things that go into the sport of ice hockey. And kids in some countries play hockey outside every day on frozen ponds or lakes for many cold months of the year.

the puck

A hockey puck is a disk made of natural rubber mixed with sulfur or another polymer to make it very hard. A hockey puck is also referred to as a "biscuit." Sometimes hockey players might say "put the 'biscuit' in the 'basket'"—meaning to score a goal.

A standard ice hockey puck is black, 1 inch thick, 3 inches in diameter, and weighs between 5.5 and 6 ounces. Some pucks are marked with team or league logos on one or both faces. Pucks are frozen before the game to reduce bouncing during play.

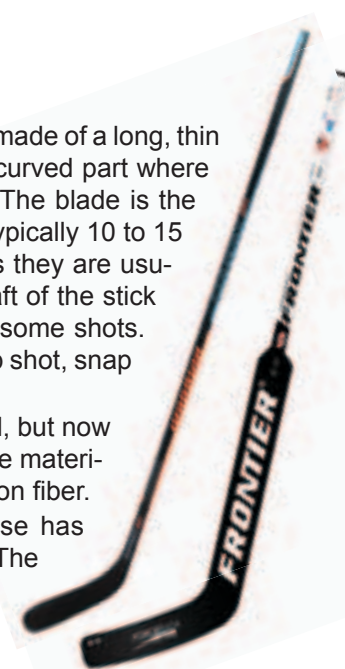


the sticks

Sticks are approximately 60 to 80 inches long, made of a long, thin handle or shaft and a flat blade at one end. The curved part where the blade and the shaft meet is called a "taper." The blade is the part of the stick used to contact the puck, and is typically 10 to 15 inches long. Stick dimensions can vary widely, as they are usually built to suit a particular player's size. The shaft of the stick is fairly rigid, but it has some flexibility to benefit some shots. Common ice hockey shots include: wrist shot, slap shot, snap shot and backhand.

Sticks have traditionally been made from wood, but now sticks can be made of more expensive and durable materials such as aluminum, kevlar, fiberglass and carbon fiber.

The special hockey stick that goaltenders use has a blade that is approximately 3 ½ inches wide. The lower 25 to 28 inches of the shaft is widened to provide more blocking surface. This area is called the "paddle."



equipment

Regular players wear a lot of equipment to help protect them from injury during this very physical game. This equipment includes a helmet with strap, a face cage or visor, a neck guard, shoulder pads, elbow pads and a hockey jersey which covers the shoulder and elbow pads and is color-coded and numbered for team and player identification. Teams, especially at upper skill levels, may have multiple jersey styles for home and away games. Equipment also includes: hockey gloves, hockey pants, jockstrap, shin guards, hockey socks, mouth guard and ice skates. Goalies wear their own versions of the equipment listed here.

the rink



www.conceptdraw.com



MV SENIORS

seniors in | action

Mondays, Tuesdays,
Wednesdays, Thursdays and
select Fridays!

Stedwick Community Center
10401 Stedwick Road

\$20/Resident
\$40/Non-resident

WINTER / SPRING Session

Now through May 19



2017 Active Aging Expo

The 9th Annual Active Aging Expo is scheduled for Monday, May 8 at The Activity Center at Bohrer Park, 506 S. Frederick Avenue, Gaithersburg.

Instructors interested in leading a class to demonstrate at the Active Aging Expo can contact Charlyn Simpson at 240-805-1578.



Blood Pressure Screenings

Seniors in Action members can take advantage of free blood pressure screenings offered by Holy Cross Germantown Hospital on the third Wednesday of every month.



SiA Caring Hands




Our program is back and committed to giving back to the community! Seniors in Action will be hosting various drives throughout the 2017 year to benefit at risk families and community members. Meetings will be held as needed.

For information on how to be involved, call Alex Alcon at 240-243-2314 or e-mail aalcon@mvf.com.



Take a look at our trip to Toby's Dinner Theatre on February 22!

Calendar

MONDAY	
	Arts and Crafts 10 a.m. to noon Artists of all skill levels will enjoy the wide variety of projects this workshop has to offer.
	Pickleball 10 a.m. to noon (starting March 20) Join Pickleball enthusiasts for fun on the court playing this sport that combines tennis, badminton and ping-pong! Limited equipment available for use.
	Book Discussion Group 10 to 11 a.m. - third Monday each month March 20: "Dinner at the Homesick Restaurant" by Anne Tyler April 17: "My Song" by Harry Belafonte
TUESDAY	
	Light Cardio Workout 9 to 10 a.m. Workout with other SiA members using light weights and resistance bands. Guided by an interactive exercise video.
	Seated Tai Chi 11:30 a.m. to 12:15 p.m. Instructor Marcy takes you through the low impact movements of Tai Chi.
WEDNESDAY	
	SiA Games / Social Hour 10 a.m. to 1 p.m. Enjoy a variety of card and board games, conversation and refreshments.
THURSDAY	
	Light Cardio Workout 9 to 10 a.m. Workout with other SiA members using light weights and resistance bands. Guided by an interactive exercise video.
	SiA Games Take 2! 10:15 a.m. to 12:30 p.m. Enjoy a variety of card and board games, conversation and refreshments.
FRIDAY	
	Bingo & Brown Bag Lunch Noon to 2 p.m. second Friday each month Bring a lunch (beverages will be provided) and play bingo with friends. Members may bring friends and family to join in the fun. Free for members, \$2/Non-member Next date: March 10

The Seniors in Action program offers convenient and affordable activities to seniors 55 years and older, Monday through Friday. For more details on any Seniors in Action activity, contact Alex Alcon at 240-243-2314 or e-mail aalcon@mvf.org.

REGISTRATION — Not a member of Seniors in Action? Sign up today at any SiA program, the MVF Office, 10120 Apple Ridge Road, or online at www.montgomeryvillage.com today!

AT YOUR LEISURE

It's time to plan for gardening

Good gardening can be a challenge for young and old alike. Digging plant beds, deadheading blossoms, even harvesting our vegetables or gathering a bouquet can cause a strain on the gardener. The Montgomery Village Garden Club will present a talk by Rockville Parks and Recreation

Department Aging in Place Home Maintenance Coordinator Jerry Jones at 7:15 p.m. on Monday, March 13 at Whetstone Community Center, 19140 Brooke Grove Court.

Jones will discuss the garden tools and adaptive equipment available for all gardeners, especially seniors, that can

enable them to continue enjoying their gardens. He will also discuss ergonomic tools and where they may be acquired.

The Montgomery Village Garden Club invites you to share refreshments and good advice from an expert in healthy gardening.

Kenwood Cherry Blossoms and Spring Flowers seasonal walk

The Seneca Valley Sugarloafers Volksmarch Club is sponsoring a seasonal Kenwood Cherry Blossoms and Spring Flowers seasonal walk in Bethesda between Saturday, March 11 and Tuesday, May 9. The 10km trail, rated 2A, is on the Capitol Crescent Trail and on streets through the Kenwood neighborhood with beautiful cherry blossoms/spring flowers. The trail has some hills. It is suitable for strollers but not for wheelchairs.

The 5km trail, rated 1A, requires driving 3.2 miles to a different start point; driving directions are on the walk instructions. The 5km trail is on the streets through the Kenwood neighborhood with beautiful cherry blossoms/spring flowers. It is suitable for strollers and wheelchairs.

After the cherry blossoms are gone, azaleas and other spring flowers will be in bloom.

Participants must register for the walk in the "Start Box" at Starbucks Coffee, 4611-E Sangamore Road (The Shops at Sumner Place), Bethesda. Walking this route should be done during daylight hours only. The walk is free; Volksmarch credit is \$3. Restrooms are available in the shopping center and along the 10km trail; restrooms are available only in the shopping center for the 5km trail. Pets are allowed, but must be leashed at all times; and walkers must clean up after their pets. Pets are not allowed in Sumner Place stores, but can be leashed outside.

For more information, contact Maribeth Evans at 301-946-5496 or e-mail gammie0612@verizon.net.

CUMC Youth Group yard sale

The Covenant United Methodist Church Youth Group is hosting a yard sale on Saturday, March 4 from 8 a.m. to 1 p.m. Items include tools, clothing, household items, electronics and furniture. This is the youth group's major fund raising event for the year. Money collected supports camps, activities and missions.

The church is located at 20301 Pleasant Ridge Drive. Everyone is encouraged to come and find unexpected treasures while supporting a worthy cause!



Life Line health screening

Life Line Screening is pleased to offer a preventive health event at North Creek Community Center, 20125 Arrowhead Road, on Thursday, March 30. Life Line Screening, a leading provider of community-based preventive health screenings, will host their affordable, non-invasive and painless health screenings.

Five screenings will be offered that scan for potential health problems related to:

blocked arteries, a leading cause of stroke; abdominal aortic aneurysms, which can lead to a ruptured aorta; hardening of the arteries in the legs, which is a strong predictor of heart disease; atrial fibrillation or irregular heart beat, which is closely tied to stroke risk; and a bone density screening for men and women, used to assess the risk of osteoporosis.

Residents are encouraged to register for a Wellness Package

which includes four vascular tests and osteoporosis screening from \$149 (\$139 with member discount). All five screenings take 60 to 90 minutes to complete.

In order to register for this event and to receive a \$10 discount off any package priced above \$129, call 1-888-653-6441 or visit www.lifelinescreening.com/communitycircle.

SCHOOL NEWS

Pre-kindergarten Head Start registration has begun for 2017-2018 school year

Registration has begun for preschool Head Start programs for Montgomery County residents with age/income eligible children.

In order to be eligible, students must be 4 years of age by Sept. 1, 2017 to enroll for the 2017-2018 school year. The following documents must be presented:

1. U.S. Birth Certificate or U.S. Passport. Children who are not U.S. citizens MUST first register with the Residency and International Admissions. Call 301-230-0686 for an appointment.
2. Family Income Verification: Parents/Guardians working or receiving income in household.
 - 2016 1040 tax statement, including all W2's and three current pay stubs for each job; if SELF-EMPLOYED, submit copy of Schedule "C" (Profit or Loss from Business) and Form 1099;
 - Proof of additional income (i.e., child support court order or notarized letter, unemployment benefits, Temporary Cash Assistance, rental income, Social Security benefits, notarized financial support letter showing dollar amount, etc.)
3. Acceptable Proof of Montgomery County Residence:
 - Current property tax bill or deed and current utility bill (if HOMEOWNER)
 - Copy of current lease and utility bill (if RENTER) and HOC letter, if applicable
 - Notarized Shared Hous-

ing Disclosure: MCPS Form 335-74 (if sharing housing and/or living with others); AND Copy of Homeowners' property tax bill or deed, or Renters' current lease; AND owner's utility bill; AND three documents mailed to the parent/guardian at the shared housing address.

4. Parent/Guardian's Photo Identification
5. Additional Supporting Documents (i.e., child care provider name, address, and telephone number; child's medical insurance information; food stamp letter; WIC; child care subsidy vouchers; rental/utilities assistance; Individualized Education Program (IEP); court documents for custody/guardianship/foster care), if applicable.

Walk-in applications are accepted daily Monday through Thursday from 9 a.m. to 4 p.m. at the center Rocking Horse Road, 4910 Macon Road, Rockville. More convenient to Montgomery Village is the Upper County Community Center, 8201 Emory Grove Road, Gaithersburg; Germantown Community Center, 18905 Kingsview Road, Germantown; Plum Gar Community Center, 19561 Scenery Drive, Germantown; or Fox Chapel Elementary School, 19315 Archdale Road, Germantown. Other centers are available; registration is ongoing.

For more information and specific registration times call 301-230-0676 or visit www.montgomeryschoolsmd.org.

Place your Ad here!

Reach 40,000 residents in Montgomery Village.

240-243-2359 | mvads@mvf.org

SHARE YOUR GOOD NEWS WITH THE VILLAGE

Montgomery Village News

Send your birth, engagement or wedding announcements, achievements or other good news to mvnews@mvf.org or complete the Milestones form online at www.montgomeryvillage.com.



MILESTONES

Resident make President's List at UA

John J. Beasley has been named to the University of Alabama (UA) President's List for the Fall 2016 semester. Beasley is admitted to the College of Engineering and Honors College. He is a member of UA's Freshman Forum, Ignite UA, UA Environmental Council, American Society of Civil Engineers, National Society of Collegiate Scholars and Habitat for Humanity. Beasley graduated from Gaithersburg

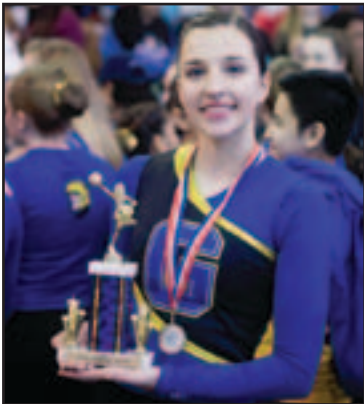
High School in 2016 as an AP Scholar with Distinction.



GHS Pom Squad places third at county competition

Congratulations to the Gaithersburg High School (GHS) Pom Squad, led by senior captain Allie Karanikas. GHS placed third, and Allie took second place for the Captain Award at the Division III County Competition. The Poms are coached by Shauna Riley and Rina Panagiotopoulos. Allie is the daughter of Jennifer Masood and the granddaughter of Phil and Helen Massey, all of Montgomery Village. Thank you to the GHS Drummers for assisting in the squad's stellar performance.

Gaithersburg High School Pom Squad Senior Captain Allie Karanikas



Montgomery Village News Milestones Submission Form

For Montgomery Village News issue date:

Engagement & Wedding Announcements

Bride's Information

Bride's First Name

M.I.

Last Name

Complete Address

Employer

Employment City, State

Job Title

Years of Service

Volunteer Work/Hobbies/Sports/Etc.

College Name

Year Graduated

Field of Study and Degree

High School

Year Graduated

Awards/Achievements

Bride's Mother's First Name

M.I.

Last Name

Bride's Father's First Name

M.I.

Last Name

Maid/Matron of Honor First Name

M.I.

Last Name

Engagement Date

Wedding Date

Wedding Location

Groom's Information

Groom's First Name

M.I.

Last Name

Complete Address

Employer

Employment City, State

Job Title

Years of Service

Volunteer Work/Hobbies/Sports/Etc.

College Name

Year Graduated

Field of Study and Degree

High School

Year Graduated

Awards/Achievements

Groom's Mother's First Name

M.I.

Last Name

Groom's Father's First Name

M.I.

Last Name

Best Man's First Name

M.I.

Last Name

Honeymoon Location

Address Where Couple Plans to Reside

Birth Announcements

Child's First Name

M.I.

Last Name

Date of Birth

Gender

Length/Weight

Mother's First Name

M.I.

Mother's Last Name

Father's First Name

M.I.

Father's Last Name

Address

Hospital Name & Location (City, State)

Achievement Announcements

First Name

M.I.

Last Name

Address

Achievement (provide details)

School/College Name and Location

Grad Year

Company/Employer

Name of Organization Presenting the Award

Send your digital photos to mvnews@mvf.org!

Contributor Information Required for Publication*

First Name

M.I.

Last Name

Address

Telephone

Email (optional)

* Please note that not all information is guaranteed to be included in any article in the Montgomery Village News. The Montgomery Village News does not guarantee that all submissions will be published. The Montgomery Village News is not responsible for any errors or omissions.

The Montgomery Village News will print milestone events and photographs at no charge for Montgomery Village residents.* Information can be provided on this form and dropped off at the MVF Office, 10120 Apple Ridge Road, Montgomery Village, MD 20886. Information can also be emailed to mvnews@mvf.org or faxed to 301-990-7071. Announcements should be received by the deadline date of the specific Montgomery Village News issue requested for publication (see page 2 of this issue for deadlines). Publication dates are available online at www.montgomeryvillage.com under Press Room, then Village News, or by calling 240-243-2331.

Anniversary Announcements

Wife's First Name

M.I.

Last Name

Husband's First Name

M.I.

Last Name

Address

Anniversary Date

Number of Years Married

Children's Full Names (those without last names will not be printed)

Number of Grandchildren

Description of How Anniversary Couple Met

Where Couple Was Married

Wife's Employer/Location

Husband's Employer/Location

Plans for Celebrating the Anniversary



**"Tree work is what we do.
Peace of mind is what we sell!"**
We go out on a limb for you!

JACKSTRAW, INC.
 Landscape & Tree Services
 301-977-9200
 www.jackstrawinc.com

- Residential & Commercial landscape services
- Pruning of ornamental trees and shrubs
- Weeding, edging & mulching
- Mowing
- Spring and fall clean up
- Pruning and removal of large trees
- Stump grinding
- Gutter cleaning
- Bulk trash removal and light hauling

Serving Montgomery Village Residents for over 30 Years
 Licensed & Insured Commercial & Residential

MD Tree License #219 Member Maryland Arborist Association & The Tree Care Industry of America

**Improving the Village...
One Garage Door at a Time!**

FREE ESTIMATES

"Most Doors are MVF Compliant"

Gaithersburg Garage Door, Inc.
 SINCE 1986
 HONESTY | INTEGRITY | DEPENDABILITY

Visit our nearby Showroom
 7845-F Airport Road
 Gaithersburg, MD

301-990-6200
 GaithersburgGarageDoor.com

Clapay NARI MHIC#120452

A to Z TURNOVER SERVICES, Inc.

www.atozturnoverservices.com

Based right here in Montgomery Village,
 A to Z can help you improve your home's look and feel!

*INTERIOR PAINTING * HARDWOOD & TILE FLOORS * KITCHEN & BATH RENOVATIONS

FREE ESTIMATES!

301-408-9346
 info@atozturnoverservices.com

Look for us at the MV Home Show on March 18

Please Note:

Every exterior modification must meet established ARB application and approval requirements regardless of whether modification or replacement material has been approved in concept in the past. Also, MVF does not take responsibility regarding claims and services advertised in the *Montgomery Village News*.

DIVINE LANDSCAPING, INC.

SPECIALIZING IN HARDSCAPES

LANDSCAPE DESIGN AND INSTALLATION • CUSTOM STONWORK
 PATIOS • WALKWAYS • WATER FEATURES • RETAINING WALLS
 GRADING AND DRAINAGE • SPRING CLEAN-UPS/MULCHING

MHIC LIC. 79864

301-252-3917
 www.divinelandscaping.com



DENTISTS	OPTOMETRISTS	PROFESSIONALS
<p>Steven M. Anolik, D.D.S. Corey B. Anolik, D.D.S. <i>Cosmetic and Restorative Dentistry</i> 1 Bank Street, Suite 110 Gaithersburg, MD 20878 301-948-8838</p>	<p>MONTGOMERY VILLAGE EYE CENTER Gabriela Miller, O.D. Eye Exams • Glasses • Contact Lenses • Emergencies 18310 Montgomery Village Ave., Suite 140 301-869-4070 www.MontgomeryVillageEye.com</p>	<p>Advertise here and reach 40,000 residents in Montgomery Village.</p> <p>Four-lines for one year, Only \$425!</p> <p>Additional lines for \$4 per line per issue.</p> <p>Call 240-243-2342 e-mail mvads@mvf.org</p>
LEGAL ADVISORS	<p>SEE YOUR LISTING HERE! Call 240-243-2342 e-mail mvads@mvf.org Reach 40,000 residents in Montgomery Village</p>	
<p>Rees Broome, PC Community Counselors Condominium and homeowner association legal advisors for 35 years <i>Dues collection, covenant enforcement, contract review, meetings, board training and community governance</i> 301-222-0152 pphilbin@reesbroome.com</p>	VETERINARIAN	
<p>LEGAL ADVISORS Oner & Lee, LLC 19636 Club House Road, Suite 110 240-912-7333 Accidents, Criminal, Family Law, Bankruptcy</p>	<p>Kristy Bennett, DVM Montgomery Village Animal Hospital 19222 Montgomery Village Ave. 301-330-2200 www.mvah.us</p>	
<p>HARDWARE STORE</p> <p>TW PERRY 8101 Snouffer School Road Hardware, Power Tools, Paint, Seasonal Supplies, Building Materials & More! www.twperry.com 301-840-9600</p>	<p>Gaithersburg Animal Hospital 280 North Frederick Avenue 301-948-2828 Washingtonian Checkbook "Best Vets" Angie's List Super Service Award 2013-2016</p>	
	YOUR LISTING	
	<p>SEE YOUR LISTING HERE! Call 240-243-2342 e-mail mvads@mvf.org Reach 40,000 residents in Montgomery Village</p>	

LOOKING FOR ACCOUNTING AND TAX SERVICES?
SEARCH OUR ADVERTISERS FIRST.

YOUR FINANCES – YOUR SECURITY
Consult • Plan • Prepare • Save • Optimize

CLASSIFIEDS

HELP WANTED

MONTGOMERY VILLAGE FOUNDATION DEPARTMENT OF RECREATION, PARKS, AND CULTURE IS SEEKING:

YOUTH CORPS WORKERS

Motivated teens ages 14 to 16 spend six weeks learning skills related to outdoor work at recreation and park facilities. Projects will include park cleanup and wildlife damage mitigation, routine playground maintenance, storm water management projects and more. Candidates must have a work permit and be available from 8 a.m. to 1 p.m., Tuesday through Saturday, June 27 through August 5. Youth Corps workers will be required to work July 4. Pay is \$8.60/hour or workers may earn Student Service Learning hours.

Youth Corp Worker application deadline is Friday, March 31. Interviews will be scheduled in April.

YOUTH CORPS SUPERVISOR

Individual with strong leadership skills to direct crew of five teens for park and environmental projects. Work hours are Tuesday through Saturday, 8 a.m. to 1 p.m., from June 27 through August 5. Youth Corps Supervisor will be required to work July 4. Additional hours available with other duties if desired. Minimum age 18 years must have a valid drivers' license with good driving record. Supervisory experience working with children/teens preferred.

Salary range: \$12 to 14/hour.

Position open until filled.

TENNIS INSTRUCTOR

Montgomery Village Foundation Department of Recreation, Parks and Culture is looking for an experienced, qualified, USTA (or other) certified individual to teach group and private tennis lessons. This is a great opportunity with flexible hours. Submit résumé with a cover letter to jserlo@mvf.org. EOE.

SEASONAL SWIM INSTRUCTORS

If you are an experienced swimmer, have good command of the basic swim strokes and are interested in working with children and/or adults, this might be the summer job for you. Hours are limited, with weekday morning, evening and/or Sunday evening hours available. Minimum age to apply is 16. Red Cross certification is preferred but not required. Current and former competitive swimmers are encouraged to apply. Training is available.

Apply online at www.montgomeryvillage.com. For more information, contact Lauren Hydorn at 240-243-2314 or e-mail lhydorn@mvf.org. EOE.

SUMMER CAMP DIRECTORS/ ASSISTANT DIRECTORS/ COUNSELORS

Director candidates must be at least 21 years old; Assistant Director candidates must be at least 18 years old; HS Diploma required; college preferred; Camp Counselor candidates must be at least 17 years old; previous experience working with youth and ability to become CPR/First Aid certified required for all camp positions. Camp age groups range from grades K – 6. Full day, morning only and afternoon only shifts available. Positions range from 8 to 9 weeks. Approximately 25 to 40 hours per week. MV Camps offer a great opportunity for teachers, college students and HS grads to have fun while making a difference. Director pay starts at \$13/hour; Assistant Director – \$11.50/hour; Counselor – \$10.75/hour. Rate of pay is dependent upon experience.

Apply online at www.montgomeryvillage.com. For more information call Jana Serlo at 240-243-2334 or e-mail jserlo@mvf.org. EOE.

DOCK MANAGER

Duties include supervision of the Lake Whetstone boat rental program during hours of operation. Rent boats to visitors, collects fees, maintain the dock area and surrounding grounds including picnic tables, volleyball court, trashcans and parking area. Provide customer service to park patrons, explain and enforce park rules. The manager opens and closes the dock each business day, monitors and performs maintenance of boats and completes daily operating reports.

Work is performed outdoors in various weather conditions from 11:15 a.m. to 7:15 p.m. on Saturdays, Sundays, Memorial Day and Labor Day, May 6 through September 24, plus scheduled in-service training. Requirements: Min. age 18, CPR & First Aid certified, hold Maryland Boating Safety Certification or have the ability to obtain one prior to employment.

Salary: \$12 to \$14/hour

ASSISTANT DOCK MANAGER

Assist in the supervision of the Lake Whetstone boat rental program during hours of operation. Rent boats to visitors, collect fees, maintain the dock area and surrounding grounds including picnic tables, volleyball court, trashcans and parking area. Provide customer service to park patrons, explain and enforce park rules. Assist with the opening and closing of the boat dock each business day, monitor maintenance of boats and complete operating reports as requested.

Work is performed outdoors in various weather conditions from 11:15 a.m. to 7:15 p.m. on Saturdays, Sundays, Memorial Day and Labor Day, May 6 through September 24, plus scheduled in-service training. Requirements: Min. age 18, CPR & First Aid certified, hold Maryland Boating Safety Certification or have the ability to obtain one prior to employment.

Salary: \$11 to \$12/hour

For more information or to apply for Youth Corps or Dock positions, visit www.montgomeryvillage.com, or contact Amy Roswurm at 240-243-2303 or e-mail aroswurm@mvf.org. EOE.

PROGRAM ASSISTANT

Whetstone Afterschool Club. Monday to Friday, 3:15 to 6:15 p.m. Assists with the daily operation of afterschool club. Supervision, leadership, setup and cleanup. Must have experience and love working with children. Call Alex Alcon at 240-243-2314 for more information. Apply online at www.montgomeryvillage.com. EOE.

SERVICES OFFERED

MILESTONE GENERAL CONTRACTORS, INC.

P: 301-793-9478
E: milestonegc@aol.com

Residential/Commercial Painting, Drywall Repairs, Gutter Cleaning, Kitchen, Basement/Bathroom Remodeling, Fence, Decks & more! Licensed and Insured. MHIC #128392

FOR RENT

2 bedroom, 2 full bath condominium, balcony, storage room, washer, dryer, free parking.

Rent \$1,550, includes all amenities.

Call 301-869-1557

Classified Advertising Order Form

Issue date(s) this ad is to run: _____

Please check the appropriate Section for your ad:

- ☐ For Sale
- ☐ House for Sale
- ☐ House for Rent
- ☐ Help Wanted
- ☐ Services
- ☐ Garage Sale
- ☐ Child Care
- ☐ Lost & Found (FREE to Village Residents)
- ☐ Giveaway (FREE to Village Residents)
- ☐ Other _____

Submit a photo of your lost pet at no additional charge.

Title: _____

Body: _____

Classified Rates: \$12 for 20 words or less and 40 cents for each additional word. Phone numbers count as one word.
Deadline: 5 p.m. Monday prior to issue date

Payment Due: \$ _____

Payment **MUST** accompany Classified Advertising Order Form. Remit by charge card, cash or check made payable to the Montgomery Village Foundation.

Credit Card Number: _____ Exp. Date: _____

3-digit V-code: _____ ☐ Visa ☐ MasterCard ☐ Discover

Name: _____ Telephone: (_____) _____

Address: _____

City: _____ State: _____ ZIP: _____

CLASSIFIED AD DEADLINE

MONDAY, MARCH 13

MONTGOMERY VILLAGE

Real Estate

Advertise Your Real Estate Services here and reach 40,000 residents in Montgomery Village. Call 240-243-2359.



HOMES

ByAudrey.com & Team®

OF WEICHERT, REALTORS®

301.977.0663

Broker office 301.540.1330



"We Sell More, Because We Do Significantly More!"

Audrey Primozic

www.HomesByAudrey.com

Just Listed!



Mont Village

\$305,000

Ready To Move-In!

Charming end-unit townhouse in Stedwick of Montgomery Village. Freshly painted! 4 bedrooms & 3.5 baths. Formal living & dining rooms. Spacious eat-in kitchen has new wall oven & new floor. Family room has sliding door to the backyard. Main level laundry room. Finished lower level has recreation room, den/office, potential 5th BR/ living suite, & full bathroom. Home Warranty! Virtual Tour: HomesByAudrey.com

Stunning!



Laytonsville

\$795,000

Exquisite Colonial!

NV Largest Leesburg Model! Sold As Is! 5 Bedrooms upstairs, 4.5 Baths, & 3-car side load garage on 3.36 acres. Elegant 2-story foyer, LR & DR, Conservatory, & Library/Study. Gourmet center isle kitchen w/ Corian counters, SS appliances, & Sunroom. 2-story FR w/ gas FP. Finished w/o LL has rec room w/ wet bar, full BA, & exercise/game room. Multi-level deck. Home Warranty! Virtual Tour: HomesByAudrey.com

Just Listed!



Laytonsville

\$549,900

Peaceful Surrounding!

Gorgeous Custom Home w/ over \$132K in upgrades & updates. 4 BR, 3 full bath, & finished 2-car side-load garage. Full BA on main level. Kitchen offers custom cherry cabinetry & granite counters. FR has wood-burning FP. 4-Season sun room w/ walls of windows & access to deck that overlooks the beautiful backyard. Unfinished basement awaits your imagination. Home Warranty! Virtual Tour: HomesByAudrey.com

www.HomesByAudrey.com For Open House Directions & Virtual Tours of All Our Homes

Audrey Primozic is a licensed agent of Weichert, Realtors®. © Copyright 2017 and ® Registered Trademark Are The Sole Property Of Audrey Primozic. All Rights Reserved.



StateFarm™

DAVE VIDMAR

Agent

Auto • Life • Home • Business

301-926-3700

www.DaveVidmar.com

9 N. Summit Avenue | Gaithersburg, MD

Advertise Your Real Estate Services with us.

Reach 40,000 residents in Montgomery Village.

Call 240-243-2359.

Find your Dream Home here!



Check local Realtor listings in each issue and online at www.montgomeryvillage.com.



ARE you FACING FORECLOSURE?

FOR ANSWERS ABOUT HOW TO GET HELP WITH YOUR HOME OR MORTGAGE VISIT

www.mdhope.org

877-462-7555

www.mdhousing.org

301-429-7400

**#1 In Sales In
Montgomery Village!**

Licensed in MD, DC, VA

Dede Burrell

More Than ¹⁰⁰⁰~~975~~ Montgomery
Village Homes Sold!

www.dedeburrell.com
e-mail: dedeburrell@gmail.com



...Call Dede today:

mobile 301-502-4041 • office 301-258-7757 x 604

New Listing



KENTLANDS CONDO \$279,000

AFFORDABLE LUXURY!

Beautiful 3 BR, 2 FBA condo in secure building located in Kentlands Ridge. Updates include carpet, paint, appliances, granite counters and NEW WINDOWS. Living room fireplace. 2nd floor location with balcony – this is a short sale transaction.

Love Where You
LIVE

Under Contract



WILLIAMS RANGE \$438,500

MUST SEE!

Lovely 4 BR, 2 FB home in Williams Range with minimal steps! Amenities include hardwood floors, renovated baths & kitchen – beautiful landscaping & brick paver hardscape – fabulous views of greenspace & wooded parkland – quiet & private setting will not be developed! Kitchen w/granite counters, center island, updated appliances – kitchen/FR combination with fireplace – WOW!

Sold



WHETSTONE \$415,000

Renovated 5 BR, 3 full BA brick home. New kitchen w/granite and stainless appliances. New master BA and dressing area – new windows – freshly painted – gleaming hardwood floors – FR w/fireplace – new floors. Brick patio – BEAUTIFUL HOME!

Coming Soon

- 🏠 **EAST VILLAGE** Garage TH w/3BR and 2.5 BA
- 🏠 **THE HEIGHTS** SFH w/2-car garage

Sold in 2016 in Montgomery Village

- | | |
|-------------------------|------------------------|
| 9517 Whetstone Dr | 18060 Royal Bonnet Cir |
| 9922 Maple Leaf Dr | 10006 Stedwick Rd #101 |
| 9222 Weathervane Pl | 19116 Rhodes Way |
| 20225 Yankee Harbor Pl | 20504 Aspenwood Ln |
| 10629 Seneca Spring Way | 9928 Forest View Pl |
| 20413 Ryecroft Ct | 9740 Whetstone Dr |
| 20410 Davencroft Ct | 18937 Diary Rd |
| 9830 Islandside Dr | 19413 Faber Ct |
| 19338 Dunbridge Way | 18080 Royal Bonnet Cir |
| 9228 Weathervane Pl | 8704 Wild Ginger Way |
| 20206 Grazing Way | 8413 Harron Valley Ct |

#4 In Top Sales at RE/MAX Realty Group
Montgomery Village's only real estate office



RE/MAX® Realty Group

A donation from each sale goes directly to Children's
Miracle Network local hospital - Children's National
Medical Center in Washington, D.C.

