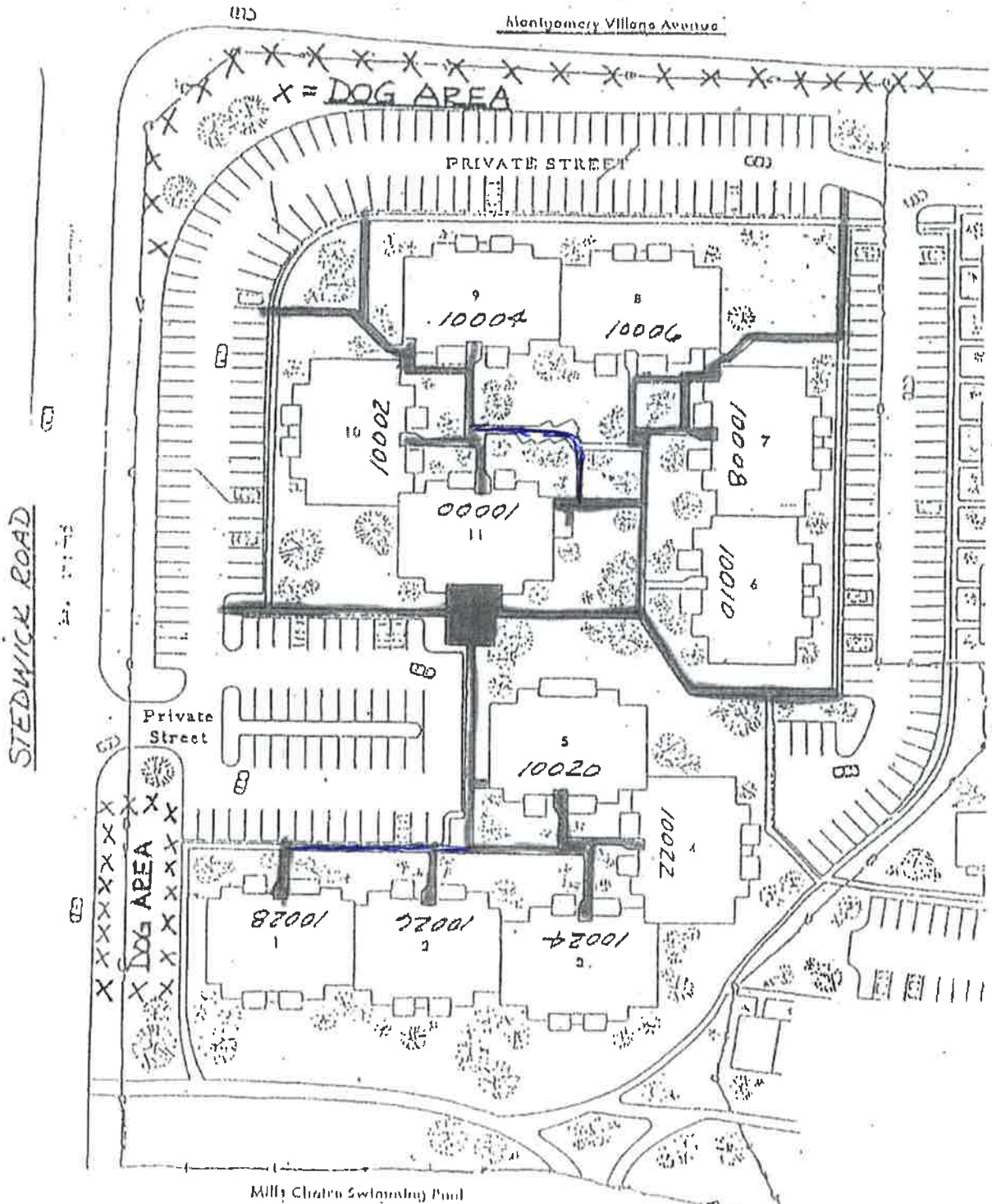


LIGER 0335 FOLD 743  
 MAP OF SECTION TWO - CENTER COURT CONDOMINIUM  
 MONTGOMERY VILLAGE



Montgomery Village Avenue and Stedwick Road are public streets. The area marked \_\_\_\_\_ are the boundaries of the Center Court Condominium and all areas within it are owned by the Condominium.

PLAT NO. 1295

### ENGINEER'S CERTIFICATE

I hereby certify that the plan of condominium shown hereon is correct; that it is a Horizontal & Vertical subdivision of the buildings known as Center Court Condominiums Section Two as compiled from Architectural Plans, that it is part of a conveyance to Kettler Brothers, Inc., a Maryland Corporation from Eugene G. Mills, et ux by deed dated April 21, 1964, recorded in Liber 3009 of Falls 252, being part of the land included in the plat entitled Plat 12, Mills Choice Phase 1, Part of Section 2-B Montgomery Village, recorded in Plat Book 81 as Plat No. 8385, all among the Land Records of Montgomery County, Maryland; that iron pipes marked thus -o- have been set where indicated; that the total area included in this plat is 270121.45 sq or 6.20113 acres.

DATE: Oct 31, 1974 By: Harold Williams  
 Harold Williams  
 Prof. Engineer  
 Md. No. 7334

### OWNER'S DECLARATION

We, Kettler Brothers, Inc., a Maryland Corporation by Charles V. Phillips, Jr., Vice President and Edward A. Desimon, Ass't. Secretary, owners of the property shown and delineated hereon, hereby adopt this plan of Condominium. The Requirements of the Horizontal Property Act, Article 21, Section 11-101 through 126 of the Annotated Code of Maryland, 1957, as amended, concerning the Condominium Plat have been complied with.

DATE: 12-12-73 By: Charles V. Phillips, Jr.  
 Kettler Brothers, Inc.  
 CHARLES V. PHILLIPS, JR., VICE PRESIDENT  
 EDWARD A. DESIMON, ASST. SECRETARY

### AREA TABULATION

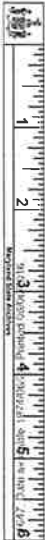
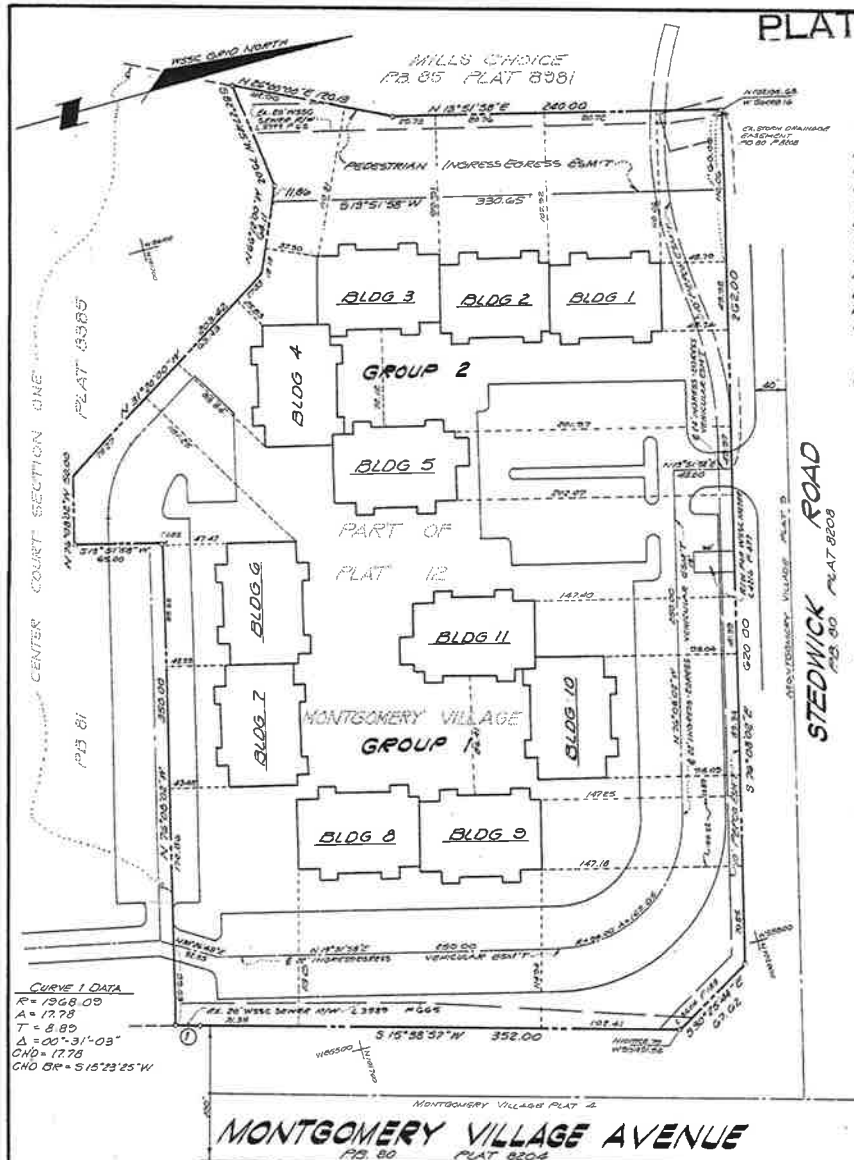
Total Area of Site = 270121.45 sq or 6.20113 Acres  
 Total Area of Bldgs. = 54,635 sq or 1.30016 Acres

FILED  
 JUL 23 1974

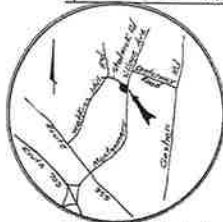
### SECTION-TWO PLAT OF CONDOMINIUM SUBDIVISION CENTER COURT

MONTGOMERY VILLAGE  
 GAITHERSBURG DISTRICT  
 MONTGOMERY COUNTY, MARYLAND  
 Scale: 1" = 60' July, 1973  
 DEWBERRY NEALON & DAVIS  
 ENGINEERS - ARCHITECTS - PLANNERS - SURVEYORS  
 18201 Montgomery Village Avenue  
 Gaithersburg, Maryland 20860

Sheet 1 of 12



CURVE 1 DATA  
 R = 1968.00  
 A = 17.78  
 T = 8.80  
 A = 00° 31' 03"  
 CHD = 12.73  
 CHD BE = S 15° 23' 25" W

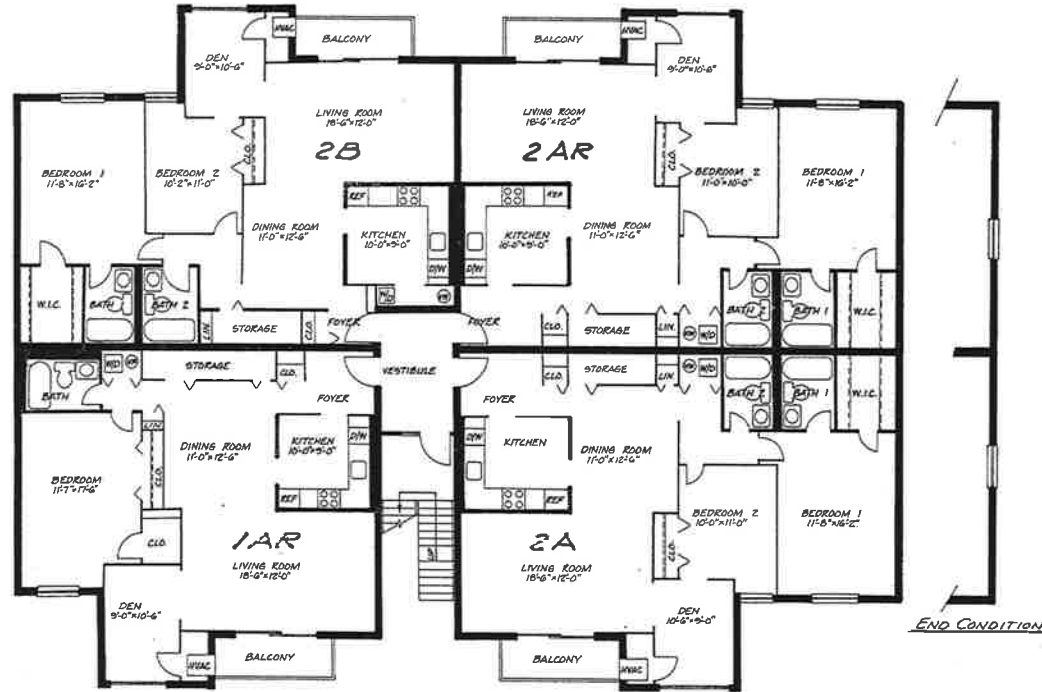


VICINITY MAP  
 SCALE: 1" = 6000'

Note: See Sheet 2 of 12 of this Set of Condominium Plats for General Notes

MONTGOMERY COUNTY CIRCUIT COURT (Condominium Plats, 603) Plat 1295, M&A, B&D

PLAT NO. 1305



2ND FLOOR PLAN  
BLDG. 3-11

FOR OPTIONAL FIREPLACE DETAIL,  
SEE SHEETS 3A, 3A-2A, 3B, 4A, 5A  
OF THE ARCHITECTURAL PLANS.

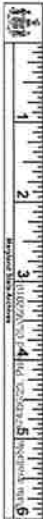
SECTION-TWO  
PLAT OF CONDOMINIUM SUBDIVISION  
**CENTER COURT**

MONTGOMERY VILLAGE  
GAITHERSBURG DISTRICT  
MONTGOMERY COUNTY, MARYLAND  
NO SCALE July, 1973

**DENBERRY, NEALON & DAVIS**  
ENGINEERS ARCHITECTS PLANNERS SURVEYORS  
1301 Montgomery Village Avenue  
Gaithersburg, Maryland 20878

Note: See Sheet 2 of 12 of this Set of Condominium Plans for General Notes

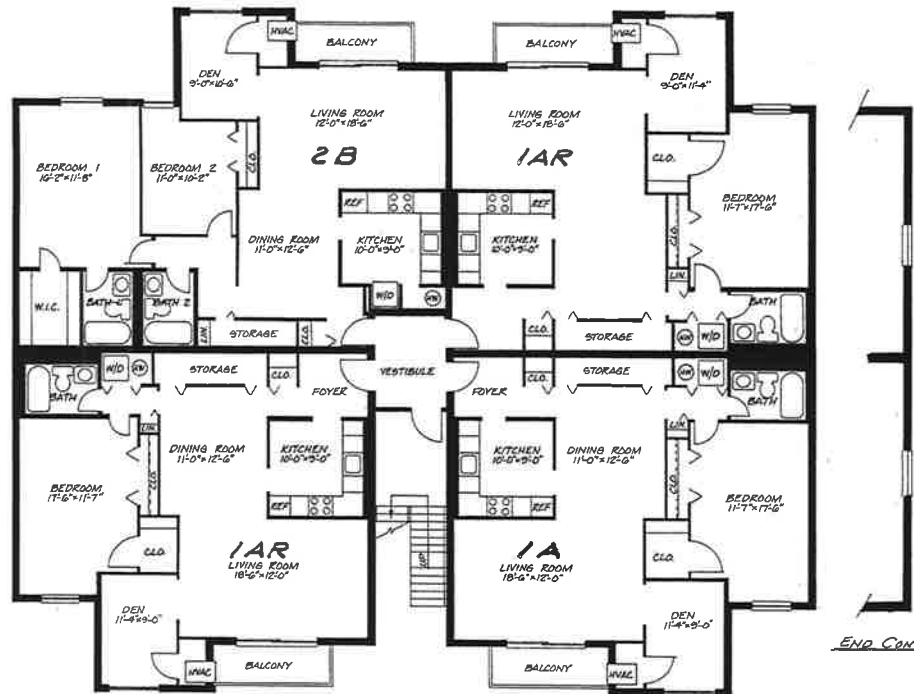
Sh. 11 of 12



MONTGOMERY COUNTY CIRCUIT COURT, (Consent) Plat, (AC) Plat 1305, MSA, S 1294, 1887

RECORDED  
JUL 23 1973

PLAT NO. 11902



END CONDITION



2<sup>ND</sup> FLOOR PLAN  
BLDG. 1 & 2

FILED  
JUL 2 1974

FOR OPTIONAL FIREPLACE DETAIL  
SEE SHEETS 3A, 7A, 9A, 13A, 14A, 21A  
OF THE ARCHITECTURAL PLANS

**SECTION-TWO**  
**PLAT OF CONDOMINIUM SUBDIVISION**  
**CENTER COURT**

MONTGOMERY VILLAGE  
GAITHERSBURG DISTRICT  
MONTGOMERY COUNTY, MARYLAND  
NO SCALE July, 1973

**DENBERRY, NEALON & DAVIS**  
ENGINEERS ARCHITECTS PLANNERS SUPERVISORS  
1920 Montgomery Village Avenue  
Gaithersburg, Maryland 20878

Note: See Sheet 2 of 12 of this set of Condominium Plats for General Notes

MONTGOMERY COUNTY CIRCUIT COURT (Condominium Plat), MD Plat 11902, MSA, S1984, 1007