



SIDING/TRIM REPLACEMENT GUIDELINES

OBJECTIVE/GOAL:

To provide homeowners with guidelines for the installation of siding or the capping of trim material on the exterior of the house.

GUIDELINE DETAILS:

- Requests for siding material will be reviewed on an individual basis taking into consideration the community and neighboring houses.
- Siding size and type must match as closely as possible to the original hardboard or wood siding in lap size and design. For example: if the original siding was beaded, then the replacement siding must be beaded.
- House trim details must be retained. These trim details include door and window trim, entrance features, window head features, window panels, frieze boards, rake boards, trim and corner boards, and porch columns.
- All house trim details must be “padded out” and not recessed so they appear the same as the original features.
- Siding color and trim color must be applied for and will be considered according to the community and neighboring houses.
- Some townhouse communities have standard siding and trim colors. Replacement materials will be determined according to the specific community criteria.
- Replacement siding must be installed on the entire house when applied for unless an exception is given.
- Any area that is currently flat trim material must remain flat trim replacement material (example: boxed bay windows)

APPLICATION CHECKLIST (items to include with your application):

- PIR (Property Improvement Request) form must be completed and signed by the owner.
- Siding and trim material.
- Siding and trim manufacturer.
- Siding and trim color.
- Siding profile and lap size.
- Trim replacement location.

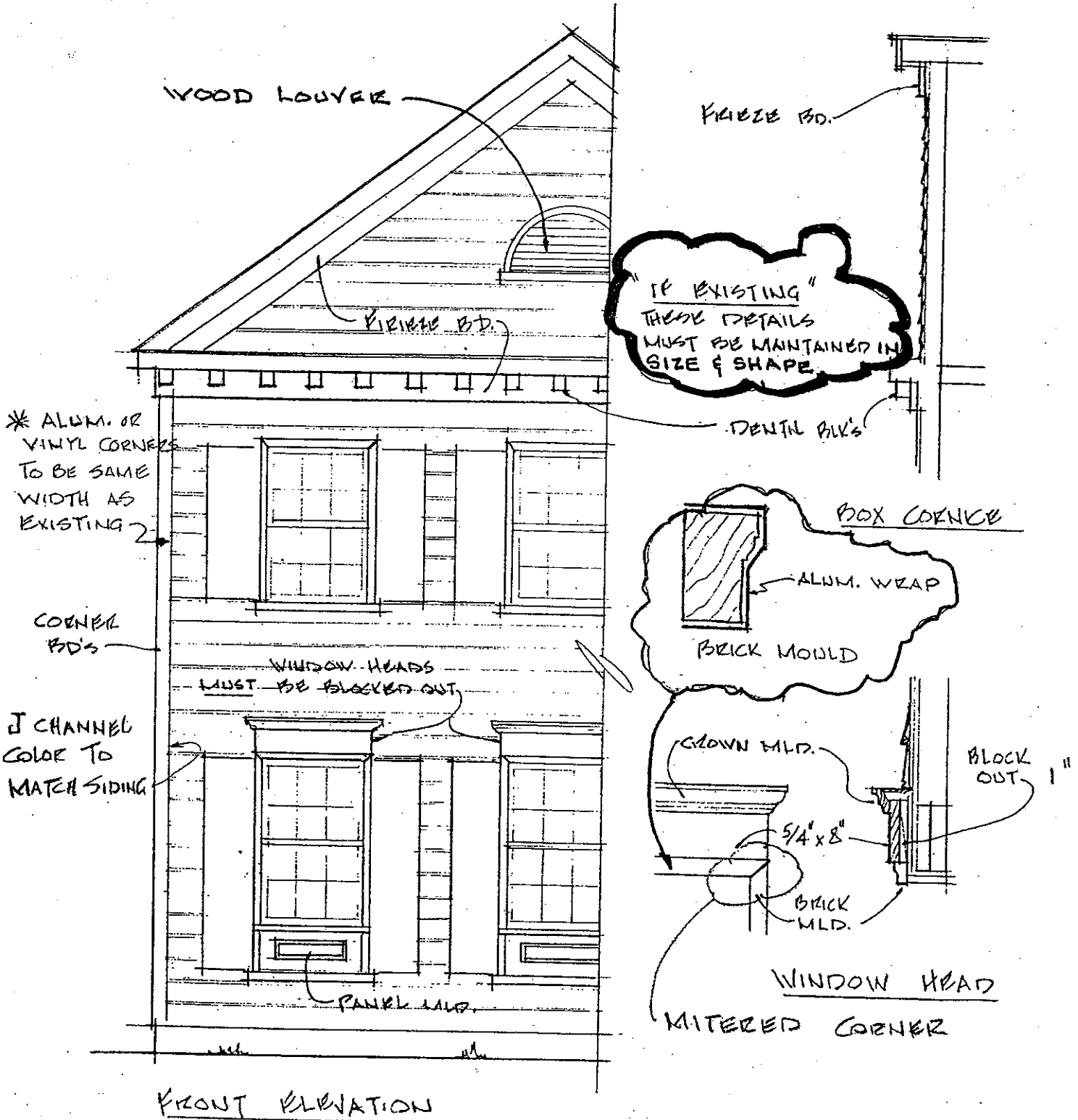
Questions: Call Architectural Standards (301) 948-0110

Alum. & Vinyl Horizontal Siding Detail Criteria

2/31/91

For installing aluminum and vinyl siding over existing hardboard siding

PLEASE NOTE: TO MAINTAIN WATER-TIGHT INTEGRITY, CAULKING MUST BE CHECKED ON A REGULAR BASIS. (COLOR OF CAULKING TO MATCH HOUSE SIDING COLOR.)

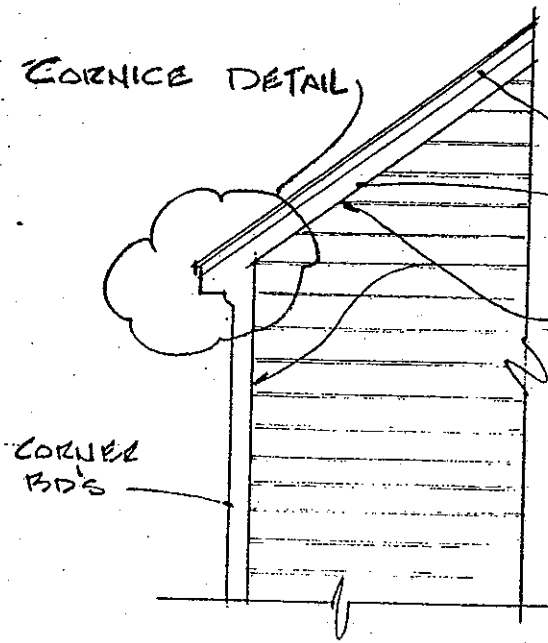


ALUM. & VINYL HORIZONTAL SIDING

3/21/91

Revised 3/19/93

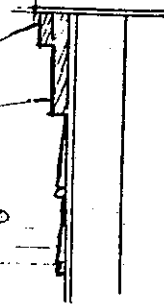
CORNICE DETAIL



RAKE MLD.

RAKE BD.

I CHANNEL COLOR TO MATCH SIDING

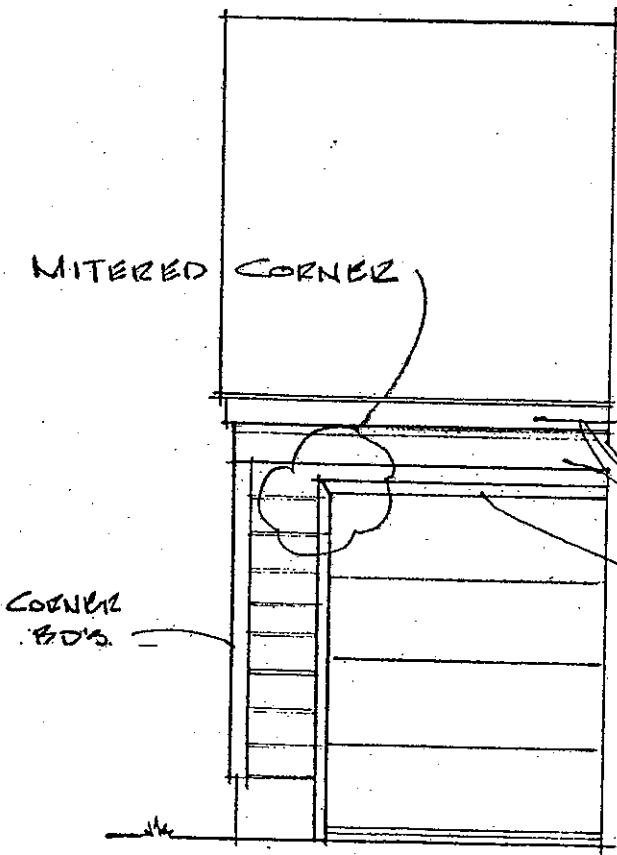


GABLE END SECTION

GABLE END

"IF EXISTING"
THESE DETAILS
MUST BE MAINTAINED IN
SIZE & SHAPE

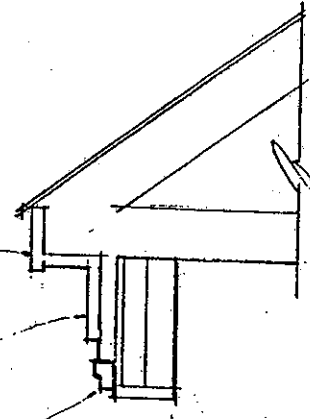
MITERED CORNER



CUTTER BD.

FRIMER BD.

BRICK MLD.



BOX CORNICE

HOUSE OR GARAGE OVERHANG



↓ Boxed Bay

FLAT REPLACEMENT MATERIAL -
WHERE FLAT WOOD PANELS WERE ORIGINALLY
(NO SIDING MATERIAL IN THIS AREA!)