



# Montgomery Village Foundation

**South Valley Park Restroom/Concession Stand Presentation:**

Saturday, January 28, 2012

# Current Concession Facility



# Current Restroom Facilities



# Current Restroom Facilities



# Background Information

**April 1998 – MVSA makes presentation to MVF Board of Directors proposing the construction of a permanent bathroom / concession building in South Valley Park.**

**MVF Board of Directors approve the MVSA proposal concept and tasks MVF staff to develop a study plan for future Board consideration.**

# Background Information

**April 1999 – Recreation Committee makes recommendation to approve the proposed bathroom / concession building in South Valley Park.**

**After nearly a year of discussion, information exchange, and meetings, the MVF Board of Directors approved the recommendation.**

# Background Information

**March 2000 through April 2002– MVSA pays for engineering and architectural services to develop plans for restrooms / concession building.**

# Background Information

**June 2002 – MVF Commercial Architectural Review Committee reviews and approves plans.**

# Background Information

**January 2003 – Project put on hold due to funding issues.**

# Background Information

**March 2010 – Long Range Facility Planning Committee ranks restroom/concession stand as 5th on list of 36 resident suggested amenities for Montgomery Village.**

# Background Information

**October 2011 – Funding for restroom/concession stand included in approved 2012 MVF budget.**

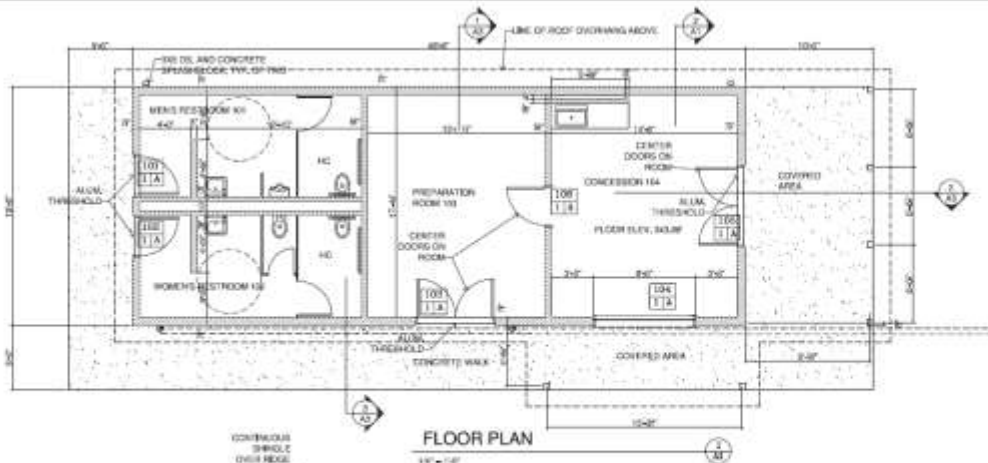
# Potential Restroom/Concession Stand Locations





CROSS SECTION

14' x 14'



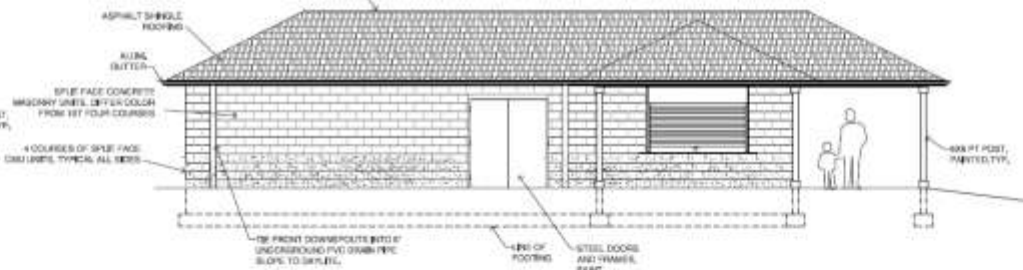
FLOOR PLAN

14' x 14'



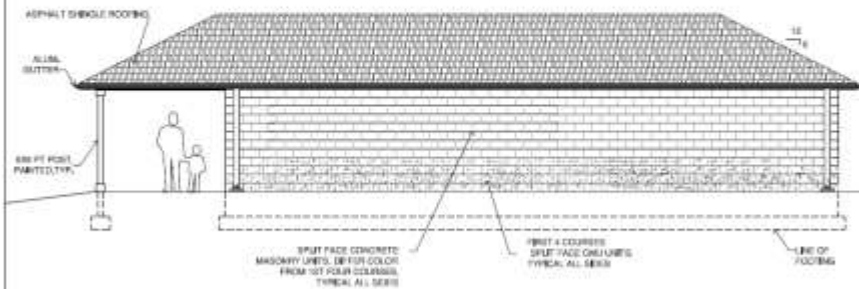
EAST ELEVATION

14' x 14'



NORTH ELEVATION

14' x 14'



SOUTH ELEVATION

14' x 14'



WEST ELEVATION

14' x 14'



**CT**  
**CONSTRUCTORS**  
 ARCHITECTS  
 1000 W. 14th Street  
 Frederick, MD 21701  
 301.946.4477

Professional Certificate  
 I certify under the State  
 Board that the plans  
 submitted here are prepared  
 or approved by me, and that  
 I am a duly licensed  
 architect under the laws of  
 the State of Maryland.  
 License No. 2003  
 Expiration Date: 03/31/2010

Professional Seal

Revision  
 Drawing Date  
 Date: JUN 28, 2012

SOUTH VALLEY PARK CONCESSION -  
 RESTROOM BUILDING  
 Montgomery Village Foundation, Inc.  
 20737 Highland Hall Drive  
 Montgomery Village, Maryland 20888

Drawing Number  
**A1**

# Police Involvement

**MVF has begun communication with police regarding project.**

**Staff met with Community Policing Officer Scott Zimmerman.**

- **Lighting.**
- **Potential Locations.**
- **Police/Security accessibility**
- **Hours of operation.**
- **Door locations.**
- **Landscaping.**

**Police review during planning process.**

# Next Steps

- **Work with engineers and County in determining facility location.**
- **MVF Board to consider proposed project at the February 23 board meeting.**